



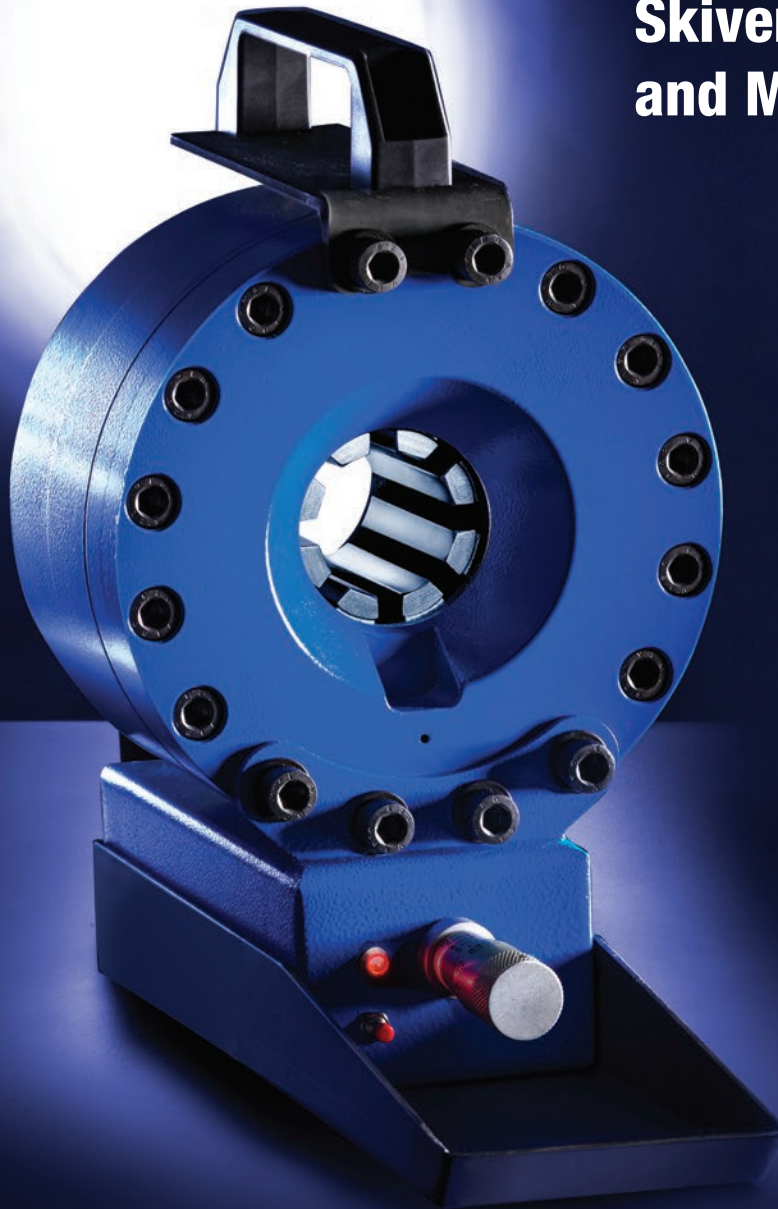
TM

KuriCrimp

TM

POWERED BY **op**

**Universal Crimpers,
Cutters, Pushers,
Skivers, Multicenters
and More**



REFERENCE PAGES

Additional Available Products.....	75-77
Cautionary Statement & Limited Warranty.....	80
Crimper Comparison.....	4, 11 & 21
Determining Crimper Capacity.....	44
Die Selection Guide.....	42-43
Hose Saw Comparison.....	48
KOA Coupling Fitting OD's.....	45-47
The KuriCrimp™ System.....	3

CRIMPERS

SERVICE CRIMPERS

KC1-H47E.....	5
KC1-H47PI.....	7
KC1-H47PM.....	6
KC1-H64PM.....	8
KC2-J67.....	10
KD165.....	9

STANDARD VOLUME CRIMPERS

KC1-H83.....	12
KC1-H130.....	14
KC1-H135.....	16
KC3-H88.....	13
KC3-H130.....	15
KC3-H135.....	17
KC3-H144.....	18
KC3-H170.....	19

HIGH VOLUME CRIMPERS

KC4-V59.....	22-23
KC4-V150.....	24, 27
KC4-V159.....	25, 27
KC4-V160.....	26, 27
KC4-V250.....	28-29
KC4-V300.....	30-31
KC4-V450.....	32-33

OPTIONS AND ACCESSORIES

Cleaning and Lubrication Kit.....	38
Die Bases.....	40
Die Racks.....	40
Electric Foot Pedals.....	39
ES3 Controller Info.....	35
ES3 Controller Options.....	35
ES4 Controller Info.....	36
ES4 Controller Options.....	37
Marking Dies.....	41
Patented Quick Change Tool Info.....	38
Patented Quick Change Tools.....	39
Quick Change Tools.....	39
Special Dies.....	41
Standard Bases.....	40
Table of Contents.....	34
Thread Checkers.....	41

HOSE CUTTERS

HCLG.....	59
HCLG-BLADE.....	59
HCMD.....	59
HCMD-BLADE.....	59
HCRCT.....	59
HCRCT-BLADE.....	59

HOSE RACKS

KCART1.....	74
KCART2.....	74
KRACK6H.....	72
KRACK6H2.....	73
KRACK6V.....	73
KRACK8H.....	72

KURISAWS™ HOSE SAWS

KCS-TF1/E-110/1.....	49
KCS-TF2/E-230/1.....	50
KCS-TF2/E-230/3.....	50
KCS-TF3/E-230/1.....	51
KCS-TF4/E-230/1.....	52
KCS-TF2-230/3.....	53
KCS-TF3-230/3.....	54
KCS-TF3/PI-230/3.....	55
KCS-TF4-230/3.....	56
KCS-TF5-230/3.....	57
Replacement Blades.....	58

MULTICENTERS

MULTICENTER-MIN & MULTICENTER-JR

Bending Tools.....	66
Flaring Tools.....	67
MULTICEN-JR.....	65
MULTICEN-MIN.....	64
Preassembly Tools.....	67

MULTICENTER-MAX

Bending Tools.....	69
Flaring Tools.....	71
MULTICEN-MAX.....	68
Preassembly Tools.....	70

PUSHERS

KPUSH2.....	60
KPUSH3.....	60
KPUSH8.....	61
KPUSH22.....	61

SKIVERS

KSKIVE1.....	62
KSKIVE2.....	63

The KuriCrimp™ System

The KuriCrimp™ System represents the coming together of three Industrial Hose Industry leaders: Kuriyama, Alfagomma® and O+P®, to bring you a complete, integrated offering of high quality hydraulic hose, industrial hose and assembly equipment.

**Kuriyama**

KuriCrimp™ brings together Kuriyama's Kuri Tec®, Tigerflex™, Piranha® and Tipsa™ thermoplastic hose brands and full line of KOA Couplings; Alfagomma's vast range of industrial and hydraulic rubber hose; and O+P's expansive line of universal hose and tubing processing equipment; culminating in a comprehensive product offering; all supported by Kuriyama's vast North American Customer Service, Warehousing and Distribution Network.

What does all this mean for you? It means Kuriyama is your complete hose manufacturer, providing one source for all your hydraulic and industrial hose assembly needs. But more than that, it means you get access to the resources of not one, but three innovative companies, each highly specialized in their respective fields, meaning you get high quality products and support you can rely on, as well as access to multiple, highly experienced research, design and development departments, with the expertise and desire to work with you to develop custom solutions to your most challenging applications.

The O+P Difference

Kuriyama is extremely excited to welcome O+P into the KuriCrimp family. Founded in 1981, O+P brings a fresh sense of exuberance and customer driven design and development to the field of hose and tubing processing equipment.

Well established in Europe, O+P's US office is located in Acton, MA, providing domestic technical product support. As an ISO 9001 manufacturer with a reputation for innovative, highly durable, low maintenance products, O+P produces all of their own mechanical components through their sister manufacturing company Sinde Srl., allowing for streamlined product development and providing for complete quality control oversight from start to finish.



O+P Head Office — Brescia, Italy

Because we continually examine ways to improve our products, we reserve the right to alter specifications or discontinue products without prior notice.



Service Crimper Comparison



KC1-H47E



KC1-H47PM



KC1-H47PI

Crimping Force (ton)	110	110	110
Max. Capacity 1-2 Wire Braided (in)	1	1	1
Max. Capacity 4 Spiral (in)	NA	NA	NA
Max. Capacity 6 Spiral (in)	NA	NA	NA
Max. Capacity Industrial (in)	NA	NA	NA
Power	Hand or Air	Hand	Air
Max. Opening with Dies (mm / in)	49 / 1.93	49 / 1.93	49 / 1.93
Page Number	5	6	7



KC1-H64PM



KD165



KC2-J67

Crimping Force (ton)	132	62	190
Max. Capacity 1-2 Wire Braided (in)	1 1/2	1 1/4	1 1/2
Max. Capacity 4 Spiral (in)	1 1/4*	1 1/4**	1 1/4*
Max. Capacity 6 Spiral (in)	NA	NA	NA
Max. Capacity Industrial (in)	NA	NA	NA
Power	Hand	1 HP (110 V)	1.5 HP (110 V)
Max. Opening with Dies (mm / in)	69 / 2.72	NA	NA
Page Number	8	9	10

* 1 1/4" up to 4,000 PSI, 1" up to 5,000 PSI

** 1 1/4" up to 3,000 PSI, 1" up to 4,000 PSI

Because we continually examine ways to improve our products, we reserve the right to alter specifications or discontinue products without prior notice.

Hose Capacity (in)	Crimping Force (ton)
1 – 2 Wire	1
4 SP / 6 SP	NA
90° Fittings	3/8
Industrial	NA

110

Opening Diameter	
Max. With Dies (mm / in)	49 / 1.93
By Die Size (mm / in)	Die Size + 20 / 0.79

Crimper Size	
L x W x H (in)	7.87 x 12.36 x 12.60
Weight (lbs)	64

Part Number	Pump Info
KC1-H47E	Hand or Air

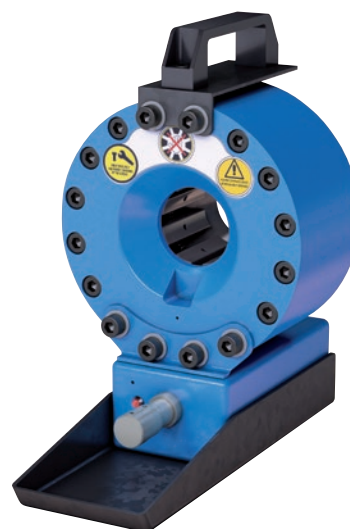
Control Mechanism:



Dial micrometer, with electric limit switch indicating when the crimp diameter is reached.

Die Series		Die Range (mm)		
H39		6 – 29		
Die Number	Crimp Range (mm)	Closed Diameter (mm)	Length (mm)	Weight (lbs/ea)
KCDH39-6	6.0 - 8.0	6	55	4.0
KCDH39-8	8.0 - 10.0	8	55	4.0
KCDH39-10	10.0 - 12.0	10	55	4.0
KCDH39-12	12.0 - 14.0	12	55	4.0
KCDH39-14	14.0 - 16.0	14	55	4.0
KCDH39-16	16.0 - 19.0	16	55	4.0
KCDH39-19	19.0 - 22.0	19	55	4.0
KCDH39-22	22.0 - 25.0	22	55	4.0
KCDH39-25	25.0 - 29.0	25	65	4.0
KCDH39-29	29.0 - 34.0	29	65	4.0

KC1-H47E Series



Frame and pump sold separately

Description: With its built-in carrying handle, and weighing a mere 64 lbs., the KC1-H47E is a crimper on the go, perfect for on-site service in remote areas. It's powered by either a separate hand or pneumatic pump.

Included Accessories:



Die Change Tool
KCDCT-H39



Carry Handle

Optional Accessories: (pgs. 34 – 41)



Hand Pump
KC1-H47E-HP



Air Pump
KC1-H47E-PAP



Support Frame
KC1-H47E-BASE



Custom Made Dies
(pg. 41)

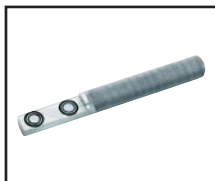
Because we continually examine ways to improve our products, we reserve the right to alter specifications or discontinue products without prior notice.

KC1-H47PM Series



Description: Looking for a reliable crimper that won't take up a lot of space? With its small footprint the KC1-H47PM is a perfect fit for crowded shops. Its small size also makes it suitable for quick trips into the field.

Included Accessories:



Die Change Tool
KCDCT-H39



Hand Pump



Die Storage
Drawer

Optional Accessories: (pgs. 34 – 41)



Custom Made Dies
(pg. 41)

Hose Capacity (in)	Crimping Force (ton)
1 – 2 Wire	1
4 SP / 6 SP	NA
90° Fittings	3/8
Industrial	NA

110

Opening Diameter
Max. With Dies (mm / in)
By Die Size (mm / in)

49 / 1.93

Die Size + 20 / 0.79

Crimper Size
L x W x H (in)
Weight (lbs)

15.4 x 20.7 x 11.8

71

Part Number	Pump Info
KC1-H47PM	Hand

Control Mechanism:



Dial micrometer, with electric limit switch indicating when the crimp diameter is reached.

Die Series	Die Range (mm)			
H39	6 – 29			
Die Number	Crimp Range (mm)	Closed Diameter (mm)	Length (mm)	Weight (lbs/ea)
KCDH39-6	6.0 - 8.0	6	55	4.0
KCDH39-8	8.0 - 10.0	8	55	4.0
KCDH39-10	10.0 - 12.0	10	55	4.0
KCDH39-12	12.0 - 14.0	12	55	4.0
KCDH39-14	14.0 - 16.0	14	55	4.0
KCDH39-16	16.0 - 19.0	16	55	4.0
KCDH39-19	19.0 - 22.0	19	55	4.0
KCDH39-22	22.0 - 25.0	22	55	4.0
KCDH39-25	25.0 - 29.0	25	65	4.0
KCDH39-29	29.0 - 34.0	29	65	4.0

Hose Capacity (in)	Crimping Force (ton)
1 – 2 Wire	1
4 SP / 6 SP	NA
90° Fittings	3/8
Industrial	NA

110

Opening Diameter	
Max. With Dies (mm / in)	49 / 1.93
By Die Size (mm / in)	Die Size + 20 / 0.79

Crimper Size	
L x W x H (in)	15.0 x 16.9 x 15.8
Weight (lbs)	84

Part Number	Pump Info
KC1-H47PI	Air

Control Mechanism:



Dial micrometer, with electric limit switch indicating when the crimp diameter is reached.

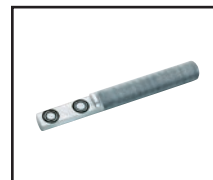
Die Series		Die Range (mm)		
H39		6 – 29		
Die Number	Crimp Range (mm)	Closed Diameter (mm)	Length (mm)	Weight (lbs/ea)
KCDH39-6	6.0 - 8.0	6	55	4.0
KCDH39-8	8.0 - 10.0	8	55	4.0
KCDH39-10	10.0 - 12.0	10	55	4.0
KCDH39-12	12.0 - 14.0	12	55	4.0
KCDH39-14	14.0 - 16.0	14	55	4.0
KCDH39-16	16.0 - 19.0	16	55	4.0
KCDH39-19	19.0 - 22.0	19	55	4.0
KCDH39-22	22.0 - 25.0	22	55	4.0
KCDH39-25	25.0 - 29.0	25	65	4.0
KCDH39-29	29.0 - 34.0	29	65	4.0

KC1-H47PI Series



Description: Looking for a reliable crimper that won't take up a lot of space? With its small footprint the KC1-H47PI is a perfect fit for crowded shops. Its small size also makes it suitable for quick trips into the field.

Included Accessories:



Die Change Tool
KCDCT-H39



Air Pump*



Die Storage
Drawer

Optional Accessories: (pgs. 34 – 41)

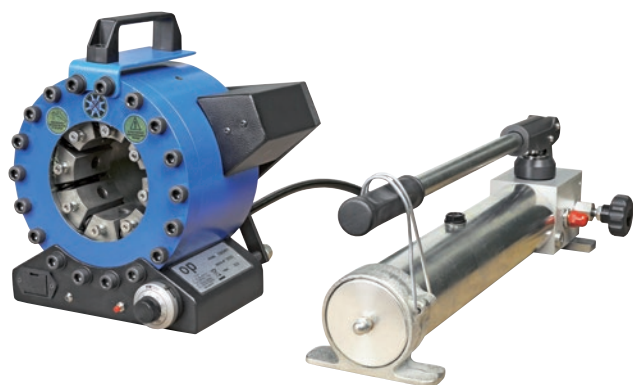


Custom Made Dies
(pg. 41)

* separate air compressor needed to operate

Because we continually examine ways to improve our products, we reserve the right to alter specifications or discontinue products without prior notice.

KC1-H64PM Series



Description: Portable and powerful. Its built-in carrying handle and 95 lbs. weight makes it excellent for switching between on-site and in-shop use. Crimps up to 1 1/2" two wire, and 1 1/4" 4 SP hydraulic hoses.

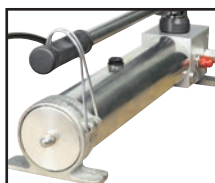


Air pump version also available*

Included Accessories:



Die Change Tool



Hand Pump



Carry Handle

Optional Accessories: (pgs. 34 – 41)



Custom Made Dies
(pg. 41)

* Hand and air pumps are not interchangeable. Air pump version is a separate product.

Hose Capacity (in)		Crimping Force (ton)
1 – 2 Wire	1 1/2	132
4 SP / 6 SP	1 1/4* / NA	
90° Fittings	NA	
Industrial	NA	

* 1 1/4" up to 4,000 PSI. 1" up to 5,000 PSI.

Opening Diameter	
Max. With Dies (mm / in)	69 / 2.72
By Die Size (mm / in)	Die Size + 15 / 0.59

Crimper Size	
L x W x H (in)	12.1 x 10.1 x 12.2
Weight (lbs)	95

Part Number	Pump Info
KC1-H64PM	Hand

Control Mechanism:



Dial micrometer, with electric limit switch indicating when the crimp diameter is reached.

Die Series		Die Range (mm)			
H64		6 – 54			
Die Number	Crimp Range (mm)	Closed Diameter (mm)	Length (mm)	Weight (lbs/ea)	
KCDH64-6	6.0 - 8.0	6	46	4.0	
KCDH64-8	8.0 - 10.0	8	46	4.0	
KCDH64-10	10.0 - 12.0	10	46	4.0	
KCDH64-12	12.0 - 14.0	12	46	4.0	
KCDH64-14	14.0 - 16.0	14	46	4.0	
KCDH64-16	16.0 - 19.0	16	46	4.0	
KCDH64-19	19.0 - 22.0	19	55	4.0	
KCDH64-22	22.0 - 25.0	22	55	4.0	
KCDH64-25	25.0 - 29.0	25	55	4.0	
KCDH64-29	29.0 - 34.0	29	60	4.0	
KCDH64-34	34.0 - 38.0	34	60	4.0	
KCDH64-38	38.0 - 42.0	38	65	4.0	
KCDH64-42	42.0 - 46.0	42	65	4.0	
KCDH64-46	46.0 - 50.0	46	65	4.0	
KCDH64-50	50.0 - 54.0	50	65	4.0	
KCDH64-54	54.0 - 58.0	54	65	4.0	

Because we continually examine ways to improve our products, we reserve the right to alter specifications or discontinue products without prior notice.

KD165 Series

Specifications:

- Dimensions L 22" X W 12.5" X H 22.25"
- Weight.....see below
- Pump/Power..... Electric 1 HP (110V)
- Reservoir..... 1 gal.
- Oil Type.....ISO Viscosity Grade 46
- Hose Capacity 1 1/4" 2 wire
..... 1 1/4" 3,000 psi
..... 1" 4,000 psi

KD165 Crimper Without Dies

Part Number	Description	Weight (lbs)
KD165	Crimper without Dies	154

Rubber Cage Dies for KD165:

Part Number	Description	Weight (lbs/ea)
KD100-12/Purple	12mm Standard Die Purple	5.7
KD100-14/Yellow	14mm Standard Die Yellow	5.5
KD100-16/Orange	16mm Standard Die Orange	5.4
KD100-19/Black	19mm Standard Die Black	5.2
KD100-20/Green	20mm Standard Die Green	5.1
KD100-22/Blue	22mm Standard Die Blue	5.0
KD100-23/Purple	23mm Standard Die Purple	5.0
KD100-27/Brown	27mm Standard Die Brown	4.8
KD100-34/Red	34mm Standard Die Red	4.4
KD100-31/Yellow	31mm Standard Die Yellow	4.6
KD100-39/Red	39mm Standard Die Red	3.8
KD100-41/Silver	41mm Standard Die Silver	3.6



Description: If your looking for a machine that can do more than just 2 wire hose, the KD165 might be your machine of choice. This machine boasts a 62 ton press, capable of crimping 2 wire and 3,000 psi hose up to 1 1/4" and 4,000 psi up to 1" ID.



Uses KD100 Series Rubber Die Cages.

Because we continually examine ways to improve our products, we reserve the right to alter specifications or discontinue products without prior notice.

KC2-J67 Series



Description: An extremely powerful, vertical unit, with a robust 190 tons of crimping force. Crimps up to 1 1/2" two wire, and up to 1 1/4" 4,000 PSI and 1" 5,000 PSI, hydraulic hoses. Comes with your choice of five crimping dies.

Included Accessories:

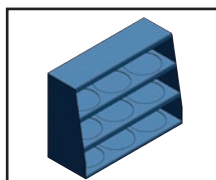


Set of Five
Crimp Dies

Optional Accessories: (pgs. 34 – 41)



Die Base Holder
DIEBASE-J67



Die Rack
DIERACK-J67



Custom Made Dies
(pg. 41)

Hose Capacity (in)		Crimping Force (ton)
1 – 2 Wire	1 1/2	190
4 SP / 6 SP	1 1/4 / NA	
90° Fittings	1 1/2	
Industrial	NA	

Opening Diameter	
Without Dies (mm / in)	67 / 2.64
With Dies	NA

Crimper Size	
L x W x H (in)	25.1 x 22.4 x 25.9
Weight (lbs)	291

Part Number	Motor Info
KC2-J67-110/1	1.5 HP (110 V) 1 PH

Control Mechanism:



Digital dial micrometer, and electromechanical power control. Easily switches between English and metric values.

Die Series		Die Range (mm)			
J67		10 – 54			
Die Number	Crimp Range (mm)	Closed Diameter (mm)	Length (mm)	Weight (lbs/ea)	
KCDJ67-6	6.0 - 8.0	6	85	14.5	
KCDJ67-8	8.0 - 10.0	8	85	14.5	
KCDJ67-10	10.0 - 12.0	10	85	14.5	
KCDJ67-12	12.0 - 14.0	12	85	14.5	
KCDJ67-14	14.0 - 16.0	14	85	14.5	
KCDJ67-16	16.0 - 19.0	16	85	14.5	
KCDJ67-19	19.0 - 22.0	19	85	14.5	
KCDJ67-22	22.0 - 25.0	22	85	14.5	
KCDJ67-25	25.0 - 29.0	25	85	14.5	
KCDJ67-29	29.0 - 34.0	29	85	14.5	
KCDJ67-34	34.0 - 38.0	34	85	14.5	
KCDJ67-38	38.0 - 42.0	38	85	14.5	
KCDJ67-42	42.0 - 46.0	42	85	14.5	
KCDJ67-46	46.0 - 50.0	46	85	14.5	
KCDJ67-50	50.0 - 54.0	50	85	14.5	
KCDJ67-54	54.0 - 58.0	54	85	14.5	

Because we continually examine ways to improve our products, we reserve the right to alter specifications or discontinue products without prior notice.


KC1-H83

KC3-H88

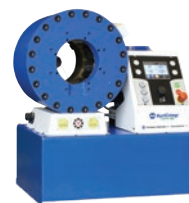
KC1-H130

KC3-H130

	KC1-H83	KC3-H88	KC1-H130	KC3-H130
Crimping Force (ton)	150	150	210	210
Max. Capacity 1-2 Wire Braided (in)	1 1/2	1 1/2	2	2
Max. Capacity 4 Spiral (in)	1 1/4	1 1/4	2	2
Max. Capacity 6 Spiral (in)	1	1	1 1/4	1 1/2*
Max. Capacity Industrial (in)	1 1/2	1 1/2	3	3
Max. Opening without Dies (mm / in)	111 / 4.37	111 / 4.37	154 / 6.06	154 / 6.06
Max. Opening with Dies (mm / in)	96 / 3.78	102 / 4.02	108 / 4.25	108 / 4.25
Power	4.0 HP (230 V)	4.0 HP (230 V)	2.9 HP (230 V)	2.9 HP (230 V)
Page Number	12	13	14	15

* Limited to intermittent use with 5,000 PSI Alfagomma hose using 1-pc fittings


KC1-H135

KC3-H135

KC3-H144

KC3-H170

	KC1-H135	KC3-H135	KC3-H144	KC3-H170
Crimping Force (ton)	330	330	440	308
Max. Capacity 1-2 Wire Braided (in)	2	2	2 1/2	2
Max. Capacity 4 Spiral (in)	2	2	2 1/2	2
Max. Capacity 6 Spiral (in)	2	2	2	2*
Max. Capacity Industrial (in)	3	3	4	4†
Max. Opening without Dies (mm / in)	162 / 6.38	162 / 6.38	203 / 7.99	219 / 8.62
Max. Opening with Dies (mm / in)	139 / 5.47	139 / 5.47	176 / 6.93	192 / 7.56
Power	7.5 HP** (230 V)	7.5 HP (230 V)	7.5 HP (230 V)	7 HP (230 V)
Page Number	16	17	18	19

* Limited to 5,000 PSI Alfagomma hose using 1-pc fittings

** 5.5 HP for single phase

† Up to 5" depending on hose and coupling type

Because we continually examine ways to improve our products, we reserve the right to alter specifications or discontinue products without prior notice.

Standard Volume Crimpers

KC1-H83 Series



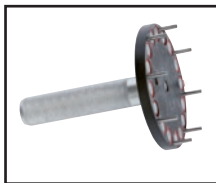
Description: A highly precise unit that packs a punch. Its small footprint makes it an ideal fit for shops where space is at a premium.

Included Accessories:

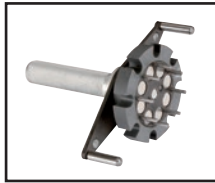


Die Rack (12 pc.)
DIERACK-H69

Optional Accessories: (pgs. 34 – 41)



Quick Change
Die Tool
KCQCT-H69



Patented Quick
Change Die Tool
KCPQCT-H69



Die Holder Base
(12 pc.)
DIEBASE-H69



Electric Foot Pedals
PEDAL-KC1



Custom Made Dies
(pg. 41)



Marking Dies
(pg. 41)

Hose Capacity (in)		Crimping Force (ton)
1 – 2 Wire	1 1/2	150
4 SP / 6 SP	1 1/4 / 1	
90° Fittings	1 1/4	
Industrial	1 1/2	

Opening Diameter	
Max. Without Dies (mm / in)	111 / 4.37
Max. With Dies (mm / in)	96 / 3.78
By Die Size (mm / in)	Die Size + 42 / 1.65

Crimper Size	
L x W x H (in)	23.3 x 23.3 x 21.3
Weight (lbs)	264

Part Number	Motor Info
KC1-H83-230/1	4.0 HP (230 V) 1 PH
KC1-H83-230/3	4.0 HP (230 V) 3 PH

Control Mechanism:

- Dial micrometer with locking switch
- Electromechanical controls with power, open/close and emergency off buttons



Die Series		Die Range (mm)			
H69		6 – 54			
Die Number	Crimp Range (mm)	Closed Diameter (mm)	Length (mm)	Weight (lbs/ea)	
KCDH69-6	6.0 - 8.0	6	60	4.0	
KCDH69-8	8.0 - 10.0	8	60	4.0	
KCDH69-10	10.0 - 12.0	10	60	4.0	
KCDH69-12	12.0 - 14.0	12	60	4.0	
KCDH69-14	14.0 - 16.0	14	60	4.0	
KCDH69-16	16.0 - 19.0	16	60	4.0	
KCDH69-19	19.0 - 22.0	19	60	4.0	
KCDH69-22	22.0 - 25.0	22	60	4.0	
KCDH69-25	25.0 - 29.0	25	60	4.0	
KCDH69-29	29.0 - 34.0	29	70	4.0	
KCDH69-34	34.0 - 38.0	34	70	4.0	
KCDH69-38	38.0 - 42.0	38	85	4.0	
KCDH69-42	42.0 - 46.0	42	85	4.0	
KCDH69-46	46.0 - 50.0	46	85	4.0	
KCDH69-50	50.0 - 54.0	50	85	4.0	
KCDH69-54	54.0 - 58.0	54	75	4.0	

Because we continually examine ways to improve our products, we reserve the right to alter specifications or discontinue products without prior notice.

Hose Capacity (in)	Crimping Force (ton)
1 – 2 Wire	1 1/2
4 SP / 6 SP	1 1/4 / 1
90° Fittings	1 1/4
Industrial	1 1/2

150

Opening Diameter	
Max. Without Dies (mm / in)	111 / 4.37
Max. With Dies (mm / in)	102 / 4.01
By Die Size (mm / in)	Die Size + 48 / 1.89

Crimper Size	
L x W x H (in)	27.6 x 24.2 x 25.2
Weight (lbs)	386

Part Number	Motor Info
KC3-H88-230/1	5.0 HP (230 V) 1 PH
KC3-H88-230/3	5.0 HP (230 V) 3 PH

Control Mechanism:


ES3

- Full-color, touch-screen display
- Stores up to 200 crimp specifications
- Built-in crimp diameter calculator
- Adjustable reopen diameter
- USB port option for data transfer

Die Series		Die Range (mm)		
H69		6 – 54		
Die Number	Crimp Range (mm)	Closed Diameter (mm)	Length (mm)	Weight (lbs/ea)
KCDH69-6	6.0 - 8.0	6	60	4.0
KCDH69-8	8.0 - 10.0	8	60	4.0
KCDH69-10	10.0 - 12.0	10	60	4.0
KCDH69-12	12.0 - 14.0	12	60	4.0
KCDH69-14	14.0 - 16.0	14	60	4.0
KCDH69-16	16.0 - 19.0	16	60	4.0
KCDH69-19	19.0 - 22.0	19	60	4.0
KCDH69-22	22.0 - 25.0	22	60	4.0
KCDH69-25	25.0 - 29.0	25	60	4.0
KCDH69-29	29.0 - 34.0	29	70	4.0
KCDH69-34	34.0 - 38.0	34	70	4.0
KCDH69-38	38.0 - 42.0	38	85	4.0
KCDH69-42	42.0 - 46.0	42	85	4.0
KCDH69-46	46.0 - 50.0	46	85	4.0
KCDH69-50	50.0 - 54.0	50	85	4.0
KCDH69-54	54.0 - 58.0	54	75	4.0

KC3-H88 Series



Description: The first in its class to offer an automatic back limit switch and ES3 electronic control, greatly increasing crimping efficiency.

Included Accessories:

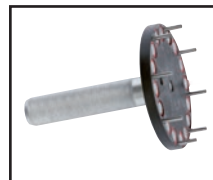
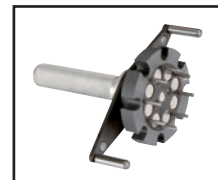


Back Limit Switch



Crimp Calculator

Optional Accessories: (pgs. 34 – 41)


 Quick Change Die Tool
KCQCT-H69

 Patented Quick Change Die Tool
KCPQCT-H69

 Die Holder Base (12 pc.)
DIEBASE-H69

 Die Rack (12 pc.)
DIERACK-H69

 Electric Foot Pedal
PEDAL-ES

 ES3 Upgrades
(pg. 35)

Because we continually examine ways to improve our products, we reserve the right to alter specifications or discontinue products without prior notice.

KC1-H130 Series



Hose Capacity (in)	Crimping Force (ton)
1 – 2 Wire	2
4 SP / 6 SP	2 / 1 1/4
90° Fittings	2
Industrial	3

210

Opening Diameter	
Max. Without Dies (mm / in)	154 / 6.06
Max. With Dies (mm / in)	108 / 4.25
By Die Size (mm / in)	Die Size + 35 / 1.38

Crimper Size	
L x W x H (in)	26.2 x 23.1 x 26
Weight (lbs)	454

Part Number	Motor Info
KC1-H130-230/1	2.9 HP (230 V) 1 PH

Die Series	Die Range (mm)
H119	6 – 96

Refer to pg. 20 for available dies

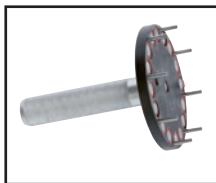
Description: The KC1-H130 is a powerful yet economical shop crimper with the ability to crimp up to 2" 4 SP, 1 1/4" 6 SP hydraulic as well as industrial hose up to 3".

Control Mechanism:

- Dial micrometer with locking switch
- Electromechanical controls with power, open/close and emergency off buttons



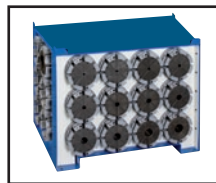
Optional Accessories: (pgs. 34 – 41)



Quick Change
Die Tool
KCQCT-H119



Patented Quick
Change Die Tool
KCPQCT-H130



Die Holder Base
(18 pc.)
DIEBASE-H130



Die Rack (8 pc.)
DIERACK-H119



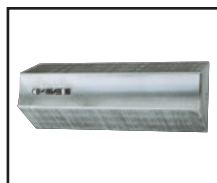
Electric Foot Pedals
PEDAL-KC1



Cleaning and
Lubrication Kit
CALKIT-H130



Custom Made Dies
(pg. 41)



Marking Dies
(pg. 41)

Because we continually examine ways to improve our products, we reserve the right to alter specifications or discontinue products without prior notice.

Hose Capacity (in)	Crimping Force (ton)
1 – 2 Wire	2
4 SP / 6 SP	2 / 1 1/2*
90° Fittings	2
Industrial	3

210

*1 1/2" limited to intermittent use with 5,000 PSI hose & 1-pc fittings

Opening Diameter	
Max. Without Dies (mm / in)	154 / 6.06
Max. With Dies (mm / in)	108 / 4.25
By Die Size (mm / in)	Die Size + 35 / 1.38

Crimper Size	
L x W x H (in)	29.9 x 27.2 x 28.8
Weight (lbs)	650

Part Number	Motor Info
KC3-H130-230/1	5.5 HP (230 V) 1 PH
KC3-H130-230/3	5.5 HP (230 V) 3 PH

Die Series	Die Range (mm)
H119	6 – 96

Refer to pg. 20 for available dies

Control Mechanism:



ES3

- Full-color, touch-screen display
- Stores up to 200 crimp specifications
- Built-in crimp diameter calculator
- Adjustable reopen diameter
- USB port option for data transfer

KC3-H130 Series



Description: The production oriented KC3-H130 takes a step up in size capabilities, with the ability to crimp 2" wire braid and 4 SP hydraulic hose, as well as 1 1/2" 5,000 PSI 6 SP hydraulic hose intermittently. Its back limit switch and ES3 computerized controller reduce crimp cycle times.

Included Accessories:

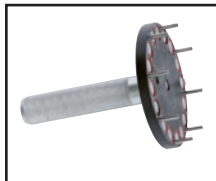


Back Limit Switch



Crimp Calculator

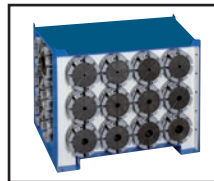
Optional Accessories: (pgs. 34 – 41)



Quick Change Die Tool
KCQCT-H119



Patented Quick Change Die Tool
KCPQCT-H130



Die Holder Base (18 pc.)
DIEBASE-H119



Die Rack (8 pc.)
DIERACK-H119



Electric Foot Pedal
PEDAL-ES



ES3 Upgrades
(pg. 35)



Cleaning and Lubrication Kit
CALKIT-H130



Custom Made Dies
(pg. 41)



Marking Dies
(pg. 41)

Because we continually examine ways to improve our products, we reserve the right to alter specifications or discontinue products without prior notice.

KC1-H135 Series



Description: A powerful, no frills crimper that gets the job done. Handles all styles of hydraulic hose up to 2", as well as industrial hose up to 3".

Hose Capacity (in)		Crimping Force (ton)
1 – 2 Wire	2	330
4 SP / 6 SP	2	
90° Fittings	2	
Industrial	3	

Opening Diameter	
Max. Without Dies (mm / in)	162 / 6.38
Max. With Dies (mm / in)	139 / 5.47
By Die Size (mm / in)	Die Size + 43 / 1.69

Crimper Size	
L x W x H (in)	30.7 x 24.8 x 28.1
Weight (lbs)	704

Part Number	Motor Info
KC1-H135-230/1	5.5 HP (230 V) 1 PH
KC1-H135-230/3	7.5 HP (230 V) 3 PH

Die Series	Die Range (mm)
H119	6 – 96

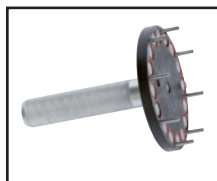
Refer to pg. 20 for available dies

Control Mechanism:

- Dial micrometer with locking switch
- Electromechanical controls with power, open/close and emergency off buttons



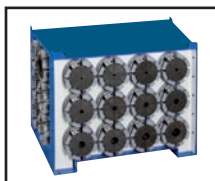
Optional Accessories: (pgs. 34 – 41)



Quick Change
Die Tool
KCQCT-H119



Patented Quick
Change Die Tool
KCPQCT-H135



Die Holder Base
(18 pc.)
DIEBASE-H119



Die Rack (8 pc.)
DIERACK-H119



Electric Foot Pedals
PEDAL-KC1



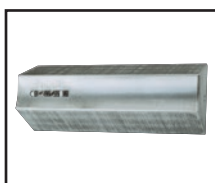
Back Mirror
MIRROR-H135/170



Cleaning and
Lubrication Kit
CALKIT-H135



Custom Made Dies
(pg. 41)



Marking Dies
(pg. 41)

Because we continually examine ways to improve our products, we reserve the right to alter specifications or discontinue products without prior notice.

Hose Capacity (in)	Crimping Force (ton)
1 – 2 Wire	2
4 SP / 6 SP	2
90° Fittings	2
Industrial	3

345

Opening Diameter	
Max. Without Dies (mm / in)	162 / 6.38
Max. With Dies (mm / in)	139 / 5.47
By Die Size (mm / in)	Die Size + 43 / 1.69

Crimper Size	
L x W x H (in)	32.3 x 29.5 x 32.3
Weight (lbs)	1,047

Part Number	Motor Info
KC3-H135-230/3	7.5 HP (230 V) 3 PH

Die Series	Die Range (mm)
H119	6 – 96

Refer to pg. 20 for available dies

Control Mechanism:



ES3

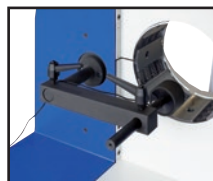
- Full-color, touch-screen display
- Stores up to 200 crimp specifications
- Built-in crimp diameter calculator
- Adjustable reopen diameter
- USB port option for data transfer

KC3-H135 Series



Description: The production oriented KC3-H135 is a powerful shop crimper that handles all types and sizes of hydraulic hose up to 2" and industrial hose up to 3". Its back limit switch and ES3 computerized controller reduce crimp cycle times.

Included Accessories:

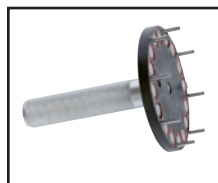


Back Limit Switch

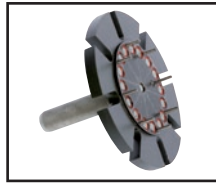


Crimp Calculator

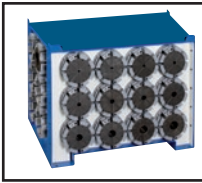
Optional Accessories: (pgs. 34 – 41)



Quick Change Die Tool
KCQCT-H119



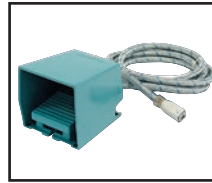
Patented Quick Change Die Tool
KCPQCT-H135



Die Holder Base (18 pc.)
DIEBASE-H119



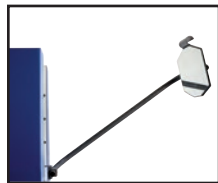
Die Rack (8 pc.)
DIERACK-H119



Electric Foot Pedal
PEDAL-ES



ES3 Upgrades
(pg. 35)



Back Mirror
MIRROR-H135/170



Cleaning and Lubrication Kit
CALKIT-H135



Custom Made Dies
(pg. 41)



Marking Dies
(pg. 41)

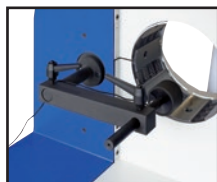
Because we continually examine ways to improve our products, we reserve the right to alter specifications or discontinue products without prior notice.

KC3-H144 Series



Description: The KC3-H144 is a powerful crossover crimper that handles all types and sizes of hydraulic hose and industrial hose up to 4". Its back limit switch and ES3 computerized controller reduce crimp cycle times. Reduction dies included.

Included Accessories:

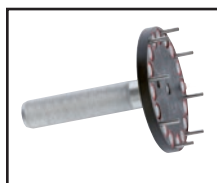


Back Limit Switch

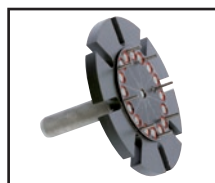


Crimp Calculator

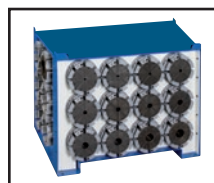
Optional Accessories: (pgs. 34 – 41)



Quick Change Die Tool
KCQCT-H119



Patented Quick Change Die Tool
KCPQCT-H135*



Die Holder Base
(18 pc.)
DIEBASE-H119



Die Rack (8 pc.)
DIERACK-H119



Electric Foot Pedal
PEDAL-ES



ES3 Upgrades
(pg. 35)



Back Mirror
MIRROR-H135/170



Cleaning and Lubrication Kit
CALKIT-H144/170



Custom Made Dies
(pg. 41)



Marking Dies
(pg. 41)

*Note: the KCPQCT-H135 works with the KC3-H144 series crimper.

Because we continually examine ways to improve our products, we reserve the right to alter specifications or discontinue products without prior notice.

Hose Capacity (in)		Crimping Force (ton)
1 – 2 Wire	2 1/2	440
4 SP / 6 SP	2 1/2	
90° Fittings	2	
Industrial	4	

Opening Diameter	
Max. Without Dies (mm / in)	203 / 7.99
Max. With Dies (mm / in)	176 / 6.93
By Die Size (mm / in)	Die Size + 45 / 1.77

Crimper Size	
L x W x H (in)	33.0 x 30.3 x 33.6
Weight (lbs)	1,213

Part Number	Motor Info
KC3-H144-230/3	7.5 HP (230 V) 3 PH

Die Series	Die Range (mm)
H119 & H144	6 – 131

Refer to pg. 20 for available dies

Control Mechanism:



ES3

- Full-color, touch-screen display
- Stores up to 200 crimp specifications
- Built-in crimp diameter calculator
- Adjustable reopen diameter
- USB port option for data transfer

Hose Capacity (in)	Crimping Force (ton)
1 – 2 Wire	2
4 SP / 6 SP	2 / 2*
90° Fittings	2
Industrial	4†
308	

*2" limited to 5,000 PSI hose using 1-pc fittings

†Up to 5" depending on hose and coupling type

Opening Diameter	
Max. Without Dies (mm / in)	219 / 8.62
Max. With Dies (mm / in)	192 / 7.56
By Die Size (mm / in)	Die Size + 61 / 2.42


Crimper Size	
L x W x H (in)	32.3 x 25.9 x 33.0
Weight (lbs)	1,102

Part Number	Motor Info
KC3-H170-230/3	7 HP (230 V) 3 PH

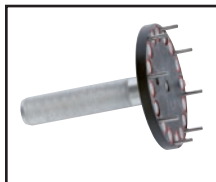
Die Series	Die Range (mm)
H119 & H144	6 – 131*

* Custom Dies available to 138 mm

Refer to pg. 20 for available dies

Control Mechanism:	
 ES3	<ul style="list-style-type: none"> • Full-color, touch-screen display • Stores up to 200 crimp specifications • Built-in crimp diameter calculator • Adjustable reopen diameter • USB port option for data transfer

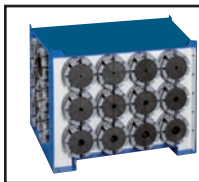
Optional Accessories: (pgs. 34 – 41)



Quick Change
Die Tool
KCQCT-H119



Patented Quick
Change Die Tool
KCPQCT-H170



Die Holder Base
(18 pc.)
DIEBASE-H119



Die Rack (8 pc.)
DIERACK-H119



Electric Foot Pedal
PEDAL-ES



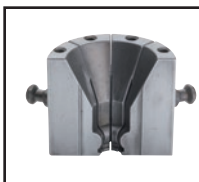
ES3 Upgrades
(pg. 35)



Back Mirror
MIRROR-H135/170



Cleaning and
Lubrication Kit
CALKIT-H144/170



Custom Made Dies
(pg. 41)



Marking Dies
(pg. 41)

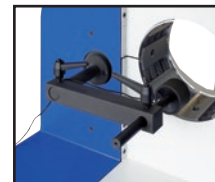


KC3-H170 Series



Description: The widest opening of all the Standard Volume Crimpers makes this crimper ideal for industrial hose. It makes an excellent hydraulic hose crimper as well, handling up to 2" wire braid and 4 SP hose, along with our 6 SP hoses up to 5000 PSI using F Series, 1-piece fittings. Reduction dies included.

Included Accessories:



Back Limit Switch



Crimp Calculator

Because we continually examine ways to improve our products, we reserve the right to alter specifications or discontinue products without prior notice.

Standard Volume Crimpers

Dies for KC1-H130, KC3-H130, KC1-H135, KC3-H135, KC3-H144 and KC3-H170 Series Crimpers

Die Number	Crimp Range (mm)	Closed Diameter (mm)	Length (mm)	Weight (lbs/ea)
KCDH119-6	6.0 - 8.0	6	60	11.7
KCDH119-8	8.0 - 10.0	8	60	11.7
KCDH119-10	10.0 - 12.0	10	60	11.7
KCDH119-12	12.0 - 14.0	12	60	11.7
KCDH119-14	14.0 - 16.0	14	60	11.7
KCDH119-16	16.0 - 19.0	16	60	11.7
KCDH119-19	19.0 - 22.0	19	60	11.7
KCDH119-22	22.0 - 25.0	22	60	12.2
KCDH119-25	25.0 - 29.0	25	60	12.0
KCDH119-29	29.0 - 34.0	29	70	12.0
KCDH119-34	34.0 - 38.0	34	70	12.0
KCDH119-38	38.0 - 42.0	38	85	12.0
KCDH119-42	42.0 - 46.0	42	85	15.5
KCDH119-46	46.0 - 50.0	46	95	16.5
KCDH119-50	50.0 - 54.0	50	95	15.5
KCDH119-54x110	54.0 - 58.0	54	110	15.5
KCDH119-58	58.0 - 63.0	58	95	14.5
KCDH119-60x110	60.0 - 63.0	58	110	14.5
KCDH119-63x120	63.0 - 69.0	63	120	14.5
KCDH119-69	69.0 - 73.0	69	100	13.5
KCDH119-73x120	73.0 - 77.0	73	120	12.5
KCDH119-77	77.0 - 86.0	77	120	12.5
KCDH119-86	86.0 - 90.0	86	120	12.5
KCDH119-90	90.0 - 96.0	90	150	12.5
KCDH119-96	96.0 - 103.0	96	120	12.5



Additional Dies for KC3-H144 and KC3-H170 Series Crimpers only

Die Number	Crimp Range (mm)	Closed Diameter (mm)	Length (mm)	Weight (lbs/ea)
KCDH144-103	103.0 - 106.0	103	130	12.5
KCDH144-106	106.0 - 111.0	106	130	12.5
KCDH144-111	111.0 - 116.0	111	130	12.5
KCDH144-116	116.0 - 121.0	116	130	12.5
KCDH144-121	121.0 - 126.0	121	130	12.5
KCDH144-126	126.0 - 131.0	126	130	12.5
KCDH144-131	131.0 - 144.0*	131	130	12.5

*Crimp range up to 170 mm for KC3-H170 crimper, with custom dies available up to 138 mm.

Because we continually examine ways to improve our products, we reserve the right to alter specifications or discontinue products without prior notice.


KC4-V59

KC4-V150

KC4-V159

KC4-V160

Crimping Force (ton)	155	340	330	386
Max. Capacity 1-2 Wire Braided (in)	1 1/2	2 1/2	2 1/2	3
Max. Capacity 4 Spiral (in)	1 1/4	2 1/2	2 1/2	3
Max. Capacity 6 Spiral (in)	1	2 1/2	2 1/2	3
Max. Capacity Industrial (in)	NA	4	5*	6
Max. Opening without Dies (mm / in)	119 / 4.69	189 / 7.44	228 / 8.98	288 / 11.34
Max. Opening with Dies (mm / in)	96 / 3.78	166 / 6.35	201 / 7.91	261 / 10.28
Power	7.5 HP (230 V)	7 HP (230 V)	7.5 HP (230 V)	10 HP (230 V)
Page Number	22-23	24, 27	25, 27	26-27

* up to 6" (depending on hose and coupling type)


KC4-V250

KC4-V300

KC4-V450

Crimping Force (ton)	551	725	728
Max. Capacity 1-2 Wire Braided (in)	3	3	3
Max. Capacity 4 Spiral (in)	3	3	3
Max. Capacity 6 Spiral (in)	3	3	3
Max. Capacity Industrial (in)	10	12	16
Power	15 HP (230 V)	10 HP (230 V)	10 HP (230 V)
Max. Opening without Dies (mm / in)	380 / 14.96	475 / 18.70	560 / 22.05
Max. Opening with Dies (mm / in)	340 / 13.39	345 / 13.58	530 / 20.80
Page Number	28-29	30-31	32-33

Because we continually examine ways to improve our products, we reserve the right to alter specifications or discontinue products without prior notice.

KC4-V59 Series



Hose Capacity (in)		Crimping Force (ton)
1 – 2 Wire	1 1/2	155
4 SP / 6 SP	1 1/4 / 1	
90° Fittings	1 1/2	
Industrial	NA	

Opening Diameter	
Max. Without Dies (mm / in)	119 / 4.69
Max. With Dies (mm / in)	96 / 3.78
By Die Size (mm / in)	Die Size + 50 / 1.97

Crimper Size	
L x W x H (in)	26.0 x 28.4 x 58.7
Weight (lbs)	1,199

Part Number	Motor Info
KC4-V59-230/3	7.5 HP (230 V) 3 PH

Die Series	Die Range (mm)
V69	6 – 46

Control Mechanism:

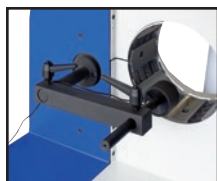


ES4

- Large, full-color, touch-screen display
- Stores up to 1,000 crimp specifications
- Built-in crimp diameter calculator
- USB port connection
- Optional upgrades such as digital caliper, history data save, barcode reader, webcam and WiFi connection

Description: A mass production crimper boasting an impressive 3,900* crimps per hour. Its back limit switch and advanced Siemen's ES4 computerized controller take efficiency to the highest level. The crimping chamber is fixed at the 6 o'clock position allowing the hose to rest inside the chamber rather than having to be centered.

Included Accessories:



Back Limit Switch



Electric Foot Pedal
PEDAL-ES



Die Holder Base
(15 pc.)



Fitting Orientation
Protractor



Back Mirror



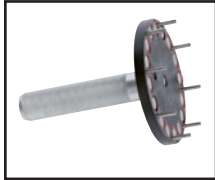
Crimp Calculator

*Theoretical with a 1/2" Δ @ 6mm hose

Because we continually examine ways to improve our products, we reserve the right to alter specifications or discontinue products without prior notice.

KC4-V59 Series

Optional Accessories: (pgs. 34 – 41)



Quick Change
Die Tool
KCQCT-H69



Patented Quick
Change Die Tool
KCPQCT-V59



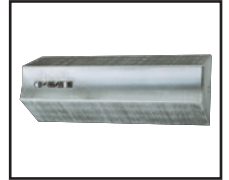
Die Rack (12 pc.)
DIERACK-H69



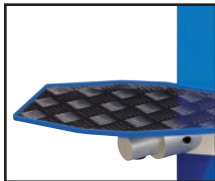
ES4 Upgrades
(pgs. 36 & 37)



Custom Made Dies
(pg. 41)



Marking Dies
(pg. 41)



Mounted Side Table
TABLE-KC



Protection Net with
Activation Switch

Dies for KC4-V59:

Die Number	Crimp Range (mm)	Closed Diameter (mm)	Length (mm)	Weight (lbs/ea)
KCDV69-6	6.0 - 8.0	6	85	4.0
KCDV69-8	8.0 - 10.0	8	85	4.0
KCDV69-10	10.0 - 12.0	10	85	4.0
KCDV69-12	12.0 - 14.0	12	85	4.0
KCDV69-14	14.0 - 16.0	14	85	4.0
KCDV69-16	16.0 - 19.0	16	85	4.0
KCDV69-19	19.0 - 22.0	19	85	4.0
KCDV69-22	22.0 - 25.0	22	85	4.0
KCDV69-25	25.0 - 29.0	25	85	4.0
KCDV69-29	29.0 - 34.0	29	85	4.0
KCDV69-34	34.0 - 38.0	34	85	4.0
KCDV69-38	38.0 - 42.0	38	85	4.0
KCDV69-42	42.0 - 46.0	42	85	4.0
KCDV69-46	46.0 - 50.0	46	85	4.0

Special dies available up to 54 mm.

Because we continually examine ways to improve our products, we reserve the right to alter specifications or discontinue products without prior notice.

KC4-V150 Series



**Greaseless
Operation**



**Silent
Pump**

Hose Capacity (in)		Crimping Force (ton)
1 – 2 Wire	2 1/2	340
4 SP / 6 SP	2 1/2	
90° Fittings	2 1/2	
Industrial	4	

Opening Diameter	
Max. Without Dies (mm / in)	189 / 7.44
Max. With Dies (mm / in)	166 / 6.35
By Die Size (mm / in)	Die Size + 70 / 2.75

Crimper Size	
L x W x H (in)	36.2 x 28.8 x 63.2
Weight (lbs)	2,707

Part Number	Motor Info
KC4-V150-230/3	7 HP (230 V) 3 PH

Die Series	Die Range (mm)
V119	6 – 96

Refer to pg. 27 for available dies

Control Mechanism:



ES4

- Large, full-color, touch-screen display
- Stores up to 1,000 crimp specifications
- Built-in crimp diameter calculator
- USB port connection for data transfer
- Optional upgrades such as digital caliper, history data save, barcode reader, webcam and WiFi connection

Description: A high volume, production crimper, the KC4-V150 crimps all types and sizes of hydraulic hose, as well as industrial hose up to 4". Its back limit switch and advanced Siemens ES4 computerized controller take efficiency to the highest level. Its power pack is separated from the main unit creating a thin profile.

Included Accessories:



Back Limit Switch



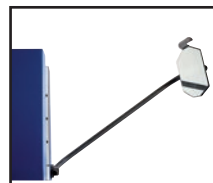
Die Cart (24 pc.)
DIECART-V119



Electric Foot Pedal
PEDAL-ES



Fitting Orientation
Protractor



Back Mirror



Crimp Calculator

Refer to page 27 for dies and optional accessories

Because we continually examine ways to improve our products, we reserve the right to alter specifications or discontinue products without prior notice.

Hose Capacity (in)	Crimping Force (ton)
1 – 2 Wire	2 1/2
4 SP / 6 SP	2 1/2
90° Fittings	2 1/2
Industrial	5*
330	

* Up to 6" (depending on hose and coupling type)

Opening Diameter	
Max. Without Dies (mm / in)	228 / 8.98
Max. With Dies (mm / in)	201 / 7.91
By Die Size (mm / in)	Die Size + 70 / 2.75

Crimper Size	
L x W x H (in)	39.4 x 45.7 x 63.6
Weight (lbs)	3,395

Part Number	Motor Info
KC4-V159-230/3	7.5 HP (230 V) 3 PH

Die Series	Die Range (mm)
V119 & V159	6 – 131*

* Large Diameter Dies available to 150 mm

Refer to pg. 27 for available dies

Control Mechanism:



ES4

- Large, full-color, touch-screen display
- Stores up to 1,000 crimp specifications
- Built-in crimp diameter calculator
- USB port connection for data transfer
- Optional upgrades such as digital caliper, history data save, barcode reader, webcam and WiFi connection

KC4-V159 Series



Greaseless
Operation



Silent
Pump



Fixed 6
O'clock
Position

Description: A mass production hydraulic hose crimper, boasting an impressive 2,400* crimps per hour. Its back limit switch and advanced Siemen's ES4 computerized controller take efficiency to the highest level. Handles a wide range of industrial hose as well up to 6." The crimping chamber is fixed at the 6 o'clock position allowing the hose to rest inside the chamber rather than having to be centered. Reduction dies included.

Included Accessories:



Back Limit Switch



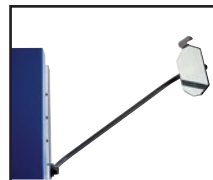
Die Holder Base
(12 pc.)



Fitting Orientation
Protractor



Electric Foot Pedal
PEDAL-ES



Back Mirror



Crimp Calculator

Refer to page 27 for dies and optional accessories

*Theoretical with a 1/2" △ @ 6mm hose

Because we continually examine ways to improve our products, we reserve the right to alter specifications or discontinue products without prior notice.

KC4-V160 Series



**Greaseless
Operation**



**Silent
Pump**

Hose Capacity (in)		Crimping Force (ton)
1 – 2 Wire	3	386
4 SP / 6 SP	3	
90° Fittings	3	
Industrial	6	

Opening Diameter	
Max. Without Dies (mm / in)	288 / 11.34
Max. With Dies (mm / in)	201 / 10.28
By Die Size (mm / in)	Die Size + 130 / 5.11

Crimper Size	
L x W x H (in)	41.8 x 34.5 x 76.2
Weight (lbs)	4,916

Part Number	Motor Info
KC4-V160-230/3	10 HP (230 V) 3 PH

Die Series	Die Range (mm)
V119 & V160	6 – 131*

*Large Diameter Dies available up to 190 mm

Refer to pg. 27 for available dies

Control Mechanism:

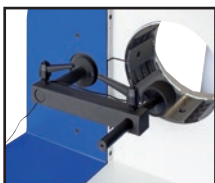


ES4

- Large, full-color, touch-screen display
- Stores up to 1,000 crimp specifications
- Built-in crimp diameter calculator
- USB port connection for data transfer
- Optional upgrades such as digital caliper, history data save, barcode reader, webcam and WiFi connection

Description: Handles industrial hose up to 6" and features an enlarged opening mechanism that allows for assemblies with large couplings or flanges. Its back limit switch and advanced Siemen's ES4 computerized controller greatly reduce cycle times. Its power pack is separated from the main unit creating a thin profile. Reduction dies included.

Included Accessories:



Back Limit Switch



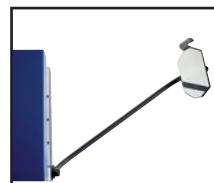
Electric Foot Pedal
PEDAL-ES



Fitting Orientation
Protractor



Crimp Calculator

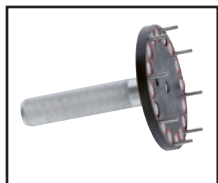


Back Mirror

Because we continually examine ways to improve our products, we reserve the right to alter specifications or discontinue products without prior notice.

KC4-V150, KC4-V159 & KC4-V160 Series

Optional Accessories: (pgs. 34 – 41)



Quick Change
Die Tool
KCQCT-H119



Patented Quick
Change Die Tool
KCPQCT-V159*



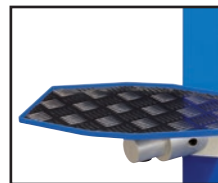
Patented Quick
Change Die Tool
KCPQCT-V160



Die Cart (24 pc.)
DIECART-V119



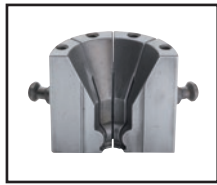
ES4 Upgrades
(pgs. 36 & 37)



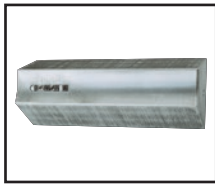
Mounted Side Table
TABLE-KC



Protection Net with
Activation Switch



Custom Made Dies
(pg. 41)



Marking Dies
(pg.41)

* Works with both KC3-V150 & KC3-V159 Series Crimpers

Available Dies for KC4-V150, KC4-V159 and KC4-V160 Series Crimpers:

Die Number	Crimp Range (mm)	Closed Diameter (mm)	Length (mm)	Weight (lbs/ea)
KCDV119-6	6.0 - 8.0	6	60	15.4
KCDV119-8	8.0 - 10.0	8	60	15.4
KCDV119-10	10.0 - 12.0	10	60	14.4
KCDV119-12	12.0 - 14.0	12	60	14.4
KCDV119-14	14.0 - 16.0	14	60	15.5
KCDV119-16	16.0 - 19.0	16	60	15.5
KCDV119-19	19.0 - 22.0	19	60	16.6
KCDV119-22	22.0 - 25.0	22	60	16.6
KCDV119-25	25.0 - 29.0	25	60	15.5
KCDV119-29	29.0 - 34.0	29	70	15.5
KCDV119-34	34.0 - 38.0	34	70	15.5
KCDV119-38	38.0 - 42.0	38	85	15.5
KCDV119-42	42.0 - 46.0	42	85	15.5
KCDV119-46	46.0 - 50.0	46	120	19.9
KCDV119-50	50.0 - 54.0	50	120	15.5
KCDV119-54	54.0 - 58.0	54	120	16.6
KCDV119-58	58.0 - 63.0	58	120	16.6
KCDV119-63	63.0 - 69.0	63	120	17.7
KCDV119-69	69.0 - 73.0	69	120	15.5
KCDV119-73	73.0 - 77.0	73	120	13.3
KCDV119-77	77.0 - 86.0	77	120	11.1
KCDV119-86	86.0 - 90.0	86	120	12.5
KCDV119-96	96.0 - 103.0	96	120	8.9

Additional Dies for KC4-V159 Series Only:

Die Number	Crimp Range (mm)	Closed Diameter (mm)	Length (mm)	Weight (lbs/ea)
KCDV159-103	103.0 - 106.0	103	126	12.2
KCDV159-106	106.0 - 111.0	106	126	12.2
KCDV159-111	111.0 - 116.0	111	126	12.2
KCDV159-116	116.0 - 121.0	116	126	12.2
KCDV159-121	121.0 - 126.0	121	126	12.2
KCDV159-126	126.0 - 131.0	126	126	12.2
KCDV159-131	131.0 - 136.0	131	126	12.2
KCDV159-150*	150.0 - 160.0	150	126	28.0

* Large Diameter Die. Other sizes are available.

Additional Dies for KC4-V160 Series Only:

Die Number	Crimp Range (mm)	Closed Diameter (mm)	Length (mm)	Weight (lbs/ea)
KCDV160-103	103.0 - 106.0	103	135	12.2
KCDV160-106	106.0 - 111.0	106	135	12.2
KCDV160-111	111.0 - 116.0	111	135	12.2
KCDV160-116	116.0 - 121.0	116	135	12.2
KCDV160-121	121.0 - 126.0	121	135	12.2
KCDV160-126	126.0 - 131.0	126	135	12.2
KCDV160-131	131.0 - 136.0	131	135	12.2
KCDV160-166*	166.0 - 178.0	166	135	29.0
KCDV160-178*	178.0 - 190.0	178	135	29.0
KCDV160-190*	190.0 - 215.0	190	135	29.0

* Large Diameter Die. Other sizes are available.

KC4-V250 Series



**Greaseless
Operation**



**Silent
Pump**

Hose Capacity (in)		Crimping Force (ton)
1 – 2 Wire	3	551
4 SP / 6 SP	3	
90° Fittings	3	
Industrial	10	

Opening Diameter	
Max. Without Dies (mm / in)	380 / 14.96
Max. With Dies (mm / in)	350 / 13.78
By Die Size (mm)	Die Size + 150

Crimper Size	
L x W x H (in)	53.1 x 26.1 x 74.2
Weight (lbs)	6,717

Part Number	Motor Info
KC4-V250-230/3	15 HP (230 V) 3 PH

Die Series	Die Range (mm)
V119 & V230	6 – 200*

* Large Diameter Dies available up to 281 mm

Control Mechanism:



ES4

- Large, full-color, touch-screen display
- Stores up to 1,000 crimp specifications
- Built-in crimp diameter calculator
- USB port connection for data transfer
- Optional upgrades such as digital caliper, history data save, barcode reader, webcam and WiFi connection

Description: Handles industrial hose up to 10" and features an enlarged opening mechanism that allows for assemblies with large couplings or flanges. Its back limit switch option and advanced Siemens's ES4 computerized controller greatly reduce cycle times. Its power pack is separated from the main unit creating a thin profile. Reduction dies included.

Included Accessories:



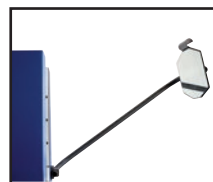
Back Limit Switch



Electric Foot Pedal
PEDAL-ES



Fitting Orientation
Protractor



Back Mirror

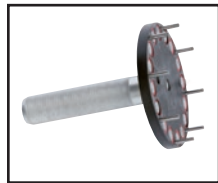


Crimp Calculator

Because we continually examine ways to improve our products, we reserve the right to alter specifications or discontinue products without prior notice.

KC4-V250 Series

Optional Accessories: (pgs. 34 – 41)



Quick Change
Die Tool
KCQCT-H119



Patented Quick
Change Die Tool
KCPQCT-V250



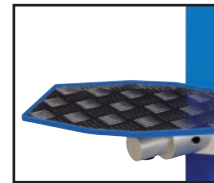
Die Cart (24 pc.)
DIECART-V119



ES4 Upgrades
(pgs. 36 & 37)



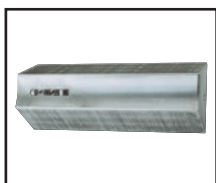
Protection Net with
Activation Switch



Mounted Side Table
TABLE-KC



Custom Made Dies
(pg. 41)



Marking Dies
(pg.41)

Available Dies:

Die Number	Crimp Range (mm)	Closed Diameter (mm)	Length (mm)	Weight (lbs/ea)
KCDV119-6	6.0 - 8.0	6	60	15.4
KCDV119-8	8.0 - 10.0	8	60	15.4
KCDV119-10	10.0 - 12.0	10	60	14.4
KCDV119-12	12.0 - 14.0	12	60	14.4
KCDV119-14	14.0 - 16.0	14	60	15.5
KCDV119-16	16.0 - 19.0	16	60	15.5
KCDV119-19	19.0 - 22.0	19	60	16.6
KCDV119-22	22.0 - 25.0	22	60	16.6
KCDV119-25	25.0 - 29.0	25	60	15.5
KCDV119-29	29.0 - 34.0	29	70	15.5
KCDV119-34	34.0 - 38.0	34	70	15.5
KCDV119-38	38.0 - 42.0	38	85	15.5
KCDV119-42	42.0 - 46.0	42	85	15.5
KCDV119-46	46.0 - 50.0	46	120	19.9
KCDV119-50	50.0 - 54.0	50	120	15.5
KCDV119-54	54.0 - 58.0	54	120	16.6
KCDV119-58	58.0 - 63.0	58	120	16.6
KCDV119-63	63.0 - 69.0	63	120	17.7
KCDV119-69	69.0 - 73.0	69	120	15.5

Die Number	Crimp Range (mm)	Closed Diameter (mm)	Length (mm)	Weight (lbs/ea)
KCDV119-73	73.0 - 77.0	73	120	13.3
KCDV119-77	77.0 - 86.0	77	120	11.1
KCDV119-86	86.0 - 90.0	86	120	12.5
KCDV119-96	96.0 - 103.0	96	120	8.9
KCDV230-103	103.0 - 106.0	103	145	79.3
KCDV230-106	106.0 - 111.0	106	145	77.0
KCDV230-111	111.0 - 116.0	111	145	77.0
KCDV230-116	116.0 - 121.0	116	145	77.0
KCDV230-121	121.0 - 126.0	121	145	83.7
KCDV230-126	126.0 - 131.0	126	145	70.5
KCDV230-131	131.0 - 136.0	131	145	70.5
KCDV230-136	136.0 - 146.0	136	145	77.0
KCDV230-146	146.0 - 156.0	146	145	77.0
KCDV230-156	156.0 - 166.0	156	145	74.9
KCDV230-166	166.0 - 178.0	166	145	79.3
KCDV230-178	178.0 - 190.0	178	145	77.0
KCDV230-190	190.0 - 200.0	190	145	77.0
KCDV230-200	200.0 - 220.0	200	145	77.0

Large Diameter Dies available to 281 mm.

Because we continually examine ways to improve our products, we reserve the right to alter specifications or discontinue products without prior notice.

KC4-V300 Series



**Greaseless
Operation**



**Silent
Pump**

Hose Capacity (in)		Crimping Force (ton)
1 – 2 Wire	3	725
4 SP / 6 SP	3	
90° Fittings	3	
Industrial	12	

Opening Diameter	
Max. Without Dies (mm / in)	475 / 18.70
Max. With Dies (mm / in)	345 / 13.58
By Die Size (mm)	Die Size + 155

Crimper Size	
L x W x H (in)	47.2 x 37.4 x 81.9
Weight (lbs)	10,868

Part Number	Motor Info
KC4-V300-230/3	10 HP (230 V) 3 PH

Die Series	Die Range (mm)
V119 & V220	6† – 190*

* Large Diameter Dies available up to 350 mm

† Reduction dies sold separately

Control Mechanism:

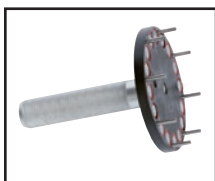


ES4

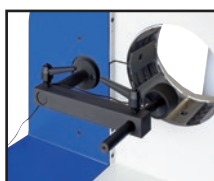
- Large, full-color, touch-screen display
- Stores up to 1,000 crimp specifications
- Built-in crimp diameter calculator
- USB port connection
- Optional upgrades such as digital caliper, history data save, barcode reader, webcam and WiFi connection

Description: Handles industrial hose up to 12" and features an enlarged opening mechanism that allows for assemblies with large couplings or flanges. Its back limit switch and advanced Siemen's ES4 computerized controller greatly reduce cycle times. Its power pack is separated from the main unit creating a thin profile. Reduction dies sold separately.

Included Accessories:



Quick Change
Die Tool



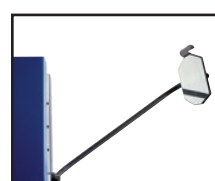
Back Limit Switch



Electric Foot Pedal
PEDAL-ES



Fitting Orientation
Protractor



Back Mirror



Crimp Calculator

Note: Higher tonnage versions available upon request. Contact Kuriyama Customer Service for details.

Because we continually examine ways to improve our products, we reserve the right to alter specifications or discontinue products without prior notice.

KC4-V300 Series

Optional Accessories: (pgs. 34 – 41)



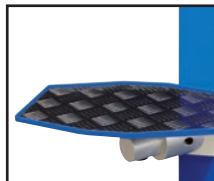
Die Cart (24 pc.)
DIECART-V119



ES4 Upgrades
(pgs. 36 & 37)



Protection Net with
Activation Switch



Mounted Side Table
TABLE-KC



Custom Made Dies
(pg. 41)



Marking Dies
(pg. 41)

Available Dies:

Die Number	Crimp Range (mm)	Closed Diameter (mm)	Length (mm)	Weight (lbs/ea)
KCDV119-6	6.0 - 8.0	6	60	15.4
KCDV119-8	8.0 - 10.0	8	60	15.4
KCDV119-10	10.0 - 12.0	10	60	14.4
KCDV119-12	12.0 - 14.0	12	60	14.4
KCDV119-14	14.0 - 16.0	14	60	15.5
KCDV119-16	16.0 - 19.0	16	60	15.5
KCDV119-19	19.0 - 22.0	19	60	16.6
KCDV119-22	22.0 - 25.0	22	60	16.6
KCDV119-25	25.0 - 29.0	25	60	15.5
KCDV119-29	29.0 - 34.0	29	70	15.5
KCDV119-34	34.0 - 38.0	34	70	15.5
KCDV119-38	38.0 - 42.0	38	85	15.5
KCDV119-42	42.0 - 46.0	42	85	15.5
KCDV119-46	46.0 - 50.0	46	120	19.9
KCDV119-50	50.0 - 54.0	50	120	15.5
KCDV119-54	54.0 - 58.0	54	120	16.6
KCDV119-58	58.0 - 63.0	58	120	16.6
KCDV119-63	63.0 - 69.0	63	120	17.7
KCDV119-69	69.0 - 73.0	69	120	15.5

Die Number	Crimp Range (mm)	Closed Diameter (mm)	Length (mm)	Weight (lbs/ea)
KCDV119-73	73.0 - 77.0	73	120	13.3
KCDV119-77	77.0 - 86.0	77	120	11.1
KCDV119-86	86.0 - 90.0	86	120	12.5
KCDV119-96	96.0 - 103.0	96	120	8.9
KCDV220-103	103.0 - 106.0	103	145	73.5
KCDV220-106	106.0 - 111.0	106	145	73.5
KCDV220-111	111.0 - 116.0	111	145	70.5
KCDV220-116	116.0 - 121.0	116	145	68.3
KCDV220-121	121.0 - 126.0	121	145	66.0
KCDV220-126	126.0 - 131.0	126	145	63.9
KCDV220-131	131.0 - 136.0	131	145	61.7
KCDV220-136	136.0 - 146.0	136	145	58.4
KCDV220-146	146.0 - 156.0	146	145	52.9
KCDV220-156	156.0 - 166.0	156	145	47.3
KCDV220-166	166.0 - 178.0	166	145	41.8
KCDV220-178	178.0 - 190.0	178	145	33.0
KCDV220-190	190.0 - 220.0	190	145	25.3

Large Diameter Dies available to 350 mm.

Reduction Dies:

Die Number	Reduction Range (mm)	Weight (lbs/ea)
REDUXV1	10.0 - 96.0	155
REDUXV2	103.0 - 190.0	102

Because we continually examine ways to improve our products, we reserve the right to alter specifications or discontinue products without prior notice.

KC4-V450 Series



**Greaseless
Operation**



**Silent
Pump**

Description: With the ability to crimp up to 16" hose with large couplings and flanges there's no job too big for the KC4-V450. Its horizontal profile eliminates the need to hoist large, heavy hoses high off the ground. Its back limit switch and advanced Siemen's ES4 computerized controller greatly reduce cycle times. Its power pack is separated from the main unit creating a thin profile.

Hose Capacity (in)		Crimping Force (ton)
1 – 2 Wire	3	728
4 SP / 6 SP	3	
90° Fittings	3	
Industrial	16	

Opening Diameter	
Max. Without Dies (mm / in)	560 / 22.05
Max. With Dies (mm / in)	530 / 20.81
By Die Size (mm / in)	Die Size + 180 / 7.08

Crimper Size	
L x W x H (in)	86.1 x 67.7 x 73.0
Weight (lbs)	13,607

Part Number	Motor Info
KC4-V450-230/3	10 HP (230 V) 3 PH

Die Series	Die Range (mm)
V119, V230, V380 & V101	6* – 350†

* Reduction dies sold separately.

† Large Diameter Dies possible upon request.

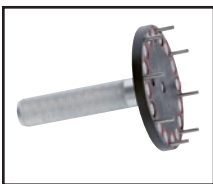
Control Mechanism:



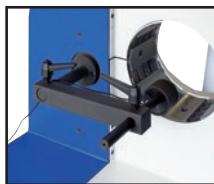
ES4

- Large, full-color, touch-screen display
- Stores up to 1,000 crimp specifications
- Built-in crimp diameter calculator
- USB port connection
- Optional upgrades such as digital caliper, history data save, barcode reader, webcam and WiFi connection

Included Accessories:



Quick Change
Die Tool
KCQT-H119



Back Limit Switch



Electric Foot Pedal
PEDAL-ES



Fitting Orientation
Protractor



Crimp Calculator

Optional Accessories: (pgs. 34 – 41)



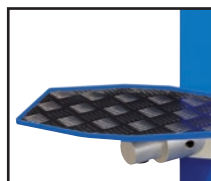
Die Cart (24 pc.)
DIECART-V119



ES4 Upgrades
(pgs. 36 & 37)



Protection Net with
Activation Switch



Side Table
TABLE-KC



Custom Made Dies
(pg. 41)



Marking Dies
(pg. 41)

Because we continually examine ways to improve our products, we reserve the right to alter specifications or discontinue products without prior notice.

KC4-V450 Series

Available Dies:

Die Number	Crimp Range (mm)	Closed Diameter (mm)	Length (mm)	Weight (lbs/ea)
KCDV119-6	6.0 - 8.0	6	60	15.4
KCDV119-8	8.0 - 10.0	8	60	15.4
KCDV119-10	10.0 - 12.0	10	60	14.4
KCDV119-12	12.0 - 14.0	12	60	14.4
KCDV119-14	14.0 - 16.0	14	60	15.5
KCDV119-16	16.0 - 19.0	16	60	15.5
KCDV119-19	19.0 - 22.0	19	60	16.6
KCDV119-22	22.0 - 25.0	22	60	16.6
KCDV119-25	25.0 - 29.0	25	60	15.5
KCDV119-29	29.0 - 34.0	29	70	15.5
KCDV119-34	34.0 - 38.0	34	70	15.5
KCDV119-38	38.0 - 42.0	38	85	15.5
KCDV119-42	42.0 - 46.0	42	85	15.5
KCDV119-46	46.0 - 50.0	46	120	19.9
KCDV119-50	50.0 - 54.0	50	120	15.5
KCDV119-54	54.0 - 58.0	54	120	16.6
KCDV119-58	58.0 - 63.0	58	120	16.6
KCDV119-63	63.0 - 69.0	63	120	17.7
KCDV119-69	69.0 - 73.0	69	120	15.5
KCDV119-73	73.0 - 77.0	73	120	13.3
KCDV119-77	77.0 - 86.0	77	120	11.1
KCDV119-86	86.0 - 90.0	86	120	12.5
KCDV119-96	96.0 - 103.0	96	120	8.9

Die Number	Crimp Range (mm)	Closed Diameter (mm)	Length (mm)	Weight (lbs/ea)
KCDV230-103	103.0 - 106.0	103	145	79.3
KCDV230-106	106.0 - 111.0	106	145	77.0
KCDV230-111	111.0 - 116.0	111	145	77.0
KCDV230-116	116.0 - 121.0	116	145	77.0
KCDV230-121	121.0 - 126.0	121	145	83.7
KCDV230-126	126.0 - 131.0	126	145	70.5
KCDV230-131	131.0 - 136.0	131	145	70.5
KCDV230-136	136.0 - 146.0	136	145	77.0
KCDV230-146	146.0 - 156.0	146	145	77.0
KCDV230-156	156.0 - 166.0	156	145	74.9
KCDV230-166	166.0 - 178.0	166	145	79.3
KCDV230-178	178.0 - 190.0	178	145	77.0
KCDV230-190	190.0 - 215.0	190	145	77.0
KCDV380-215	215.0 - 220.0	215	220	291.0
KCDV380-220	220.0 - 265.0	220	220	335.0
KCDV380-265	265.0 - 270.0	265	220	253.0
KCDV380-270	270.0 - 280.0	270	220	211.0
KCDVI01-280	280.0 - 300.0	280	220	211.0
KCDVI01-300	300.0 - 320.0	300	220	211.0
KCDVI01-320	320.0 - 340.0	320	220	211.0
KCDVI01-340	340.0 - 360.0	340	220	211.0
KCDVI01-360	360.0 - 380.0	360	220	211.0
KCDVI01-380	380.0 - 400.0	380	220	211.0

Reduction Dies:

Die Number	Reduction Range (mm)	Weight (lbs/ea)
REDUXV1	10.0 - 96.0	155
REDUXV3	103.0 - 200.0	125

Because we continually examine ways to improve our products, we reserve the right to alter specifications or discontinue products without prior notice.

The Power to Personalize

Customize your crimper to suit your needs. The KuriCrimp™ line offers a wide array of options and accessories, including die bases and racks, custom and marking dies and a wide array of ES3 and ES4 upgrade options.

Table of Contents

ES3 Controller Info	35
ES3 Controller Options.....	35
ES4 Controller Info	36
ES4 Controller Options.....	37
Patented Quick Change Tool Info.....	38
Cleaning and Lubrication Kit	38
Quick Change Tools	39
Patented Quick Change Tools	39
Electric Foot Pedals	39
Die Racks.....	40
Die Bases.....	40
Standard Bases	40
Custom Marking and Special Dies	41
Thread Checkers	41



Die Bases, Quick Change Tools and Foot Pedals



Die Carts and Racks



ES3 and ES4 Software upgrade options



Bases and Cleaning Kits



Custom, Interlock and Marking Dies

Because we continually examine ways to improve our products, we reserve the right to alter specifications or discontinue products without prior notice.

ES3 Programmable Electronic Controller

Included on all KC3 Series Crimpers

ES3 Programmable Logic Controller, with 5.7" wide, full-color, touch-screen display. Delivers the following crimp control options, in an easy to navigate format, improving crimp quality, safety, and reduced crimp cycle times.

Crimp Specification Memory - Stores up to 200 separate hose crimp specifications for immediate recall.

Crimp Diameter Calculator – Automatically calculates crimp diameter based on hose ID, OD, shank OD and ferrule thickness.

Multiple Crimp Cycles - Choose between manual, automatic and semi-automatic crimping modes, with the ability to toggle between modes during crimping.

Adjustable Reopen Diameter – Allows operator to set smaller reopen diameters, eliminating the need for the dies to fully reset in between crimps, reducing crimp cycle time when doing multiple crimps of the same type.



All ES3 models equipped with built-in crimp diameter calculator.

ES3 UPGRADE OPTIONS

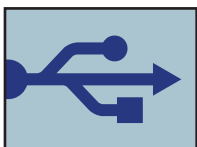
USB Port Connection - Allows for easy uploading or downloading of crimp specifications in CSV format.

Multi-step Crimp Option - Executes up to 5 different crimp diameters in succession. Reduces cycle time in instances when crimping multiple hoses when more than one crimp diameter is required.

Quality Check Function - Compares actual recorded crimping pressure with pre-determined acceptable pressure range in order to help ensure crimp was performed properly and help catch anomalies.

Pressure Controlled Crimping - Allows for crimping according to force instead of diameter.

USB Port



Part Number	Works with Crimpers
ES3-USB	All KC3 Series Models

Quality Check



Part Number	Works with Crimpers
ES3-QUAL	All KC3 Series Models

Multistep Crimping



Part Number	Works with Crimpers
ES3-MULTI	All KC3 Series Models

Pressure Controlled Crimping



Part Number	Works with Crimpers
ES3-PRESS	All KC3 Series Models

Because we continually examine ways to improve our products, we reserve the right to alter specifications or discontinue products without prior notice.

Siemens ES4 Programmable Electronic Controller

Included on all KC4 Series Crimpers



Siemens ES4 Programmable Logic Controller, with 7" wide, full-color, touch-screen display. Provides the following crimp control options and features, in an easy to understand and navigate format, improving crimp quality, safety, and reduced crimp cycle times.

Crimp Specification Memory - Stores up to 1,000 separate hose crimp specifications for immediate recall.

Crimp Diameter Calculator – Automatically calculates crimp diameter based on hose ID, OD, shank OD and ferrule thickness.

Multiple Crimp Cycles - Choose between manual, automatic and semi-automatic crimping modes, with the ability to toggle between modes during crimping.

LAN or WiFi Connection – Allows for easy uploading, downloading or editing of crimp specs via computer, as well as the ability to actively view the ES4 screen on computer or iPhone in order to monitor the crimping process.

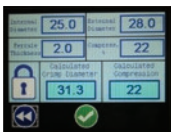
USB Port Connection - Allows for easy uploading or downloading of crimp specifications in CSV format.

Adjustable Reopen Diameter – Allows operator to set a smaller reopen diameter, eliminating the need for the dies to fully reset in between crimps, reducing crimp cycle time when doing multiple crimps of the same type.

Quality Check Function - Compares actual recorded crimping pressure with pre-determined acceptable pressure range in order to help ensure crimp was performed properly and help catch anomalies.

Pressure Controlled Crimping - Allows for crimping according to force instead of diameter.

Service Notifications - Alerts operator to factory service recommendations such as oil changes, filter changes, maintenance inspections, calibrations, etc.



All ES4 models equipped with built-in crimp diameter calculator.



All ES4 models come equipped with built-in factory service suggestion notification alerts.

ES4 UPGRADE OPTIONS

Self-correcting Digital Caliper – Electronic caliper directly connected to the crimper eliminates the possibility of user error. Requires operator to properly zero out caliper before checking hose and automatically calculates any additional crimp that may be required due to “spring-back.”

Crimp History Data Save – Automatically records crimp history, including operator name, batch number, crimp diameter, crimp corrections and crimp dies used for export onto CSV file.

Multistep Crimp Option – Executes up to 5 different crimp diameters in succession. Reduces cycle time in instances when crimping multiple hoses when more than one crimp diameter is required.

Crimp Spec Barcode Reader – Links your most commonly used crimp specifications to a printable barcode for instant call-up. Bar code scanner included.

Webcam – Camera allows operator to view crimping process through 8" monitor. Includes additional LED lighting for better visibility.



Digital Caliper automatically generates crimp correction for safety.



Barcode Reader instantly calls up saved crimp diameter

Digital Caliper



Part Number	Works with Crimpers
ES4-DIGCAL-V59	KC4-V59 & KC4-V150
ES4-DIGCAL-V159	KC4-V159 & KC4-V160
ES4-DIGCAL-V250	KC4-V250, KV4-V300 & KC4-V450

Barcode Reader



Part Number	Works with Crimpers
ES4-BCODE-V59	All KC4 Series Models

Crimp History Data Save



Part Number	Works with Crimpers
ES4-DATASAVE	All KC4 Series Models

Webcam



Part Number	Works with Crimpers
ES4-WEBCAM	All KC4 Series Models

Multistep Crimping



Part Number	Works with Crimpers
ES4-MULTI	All KC4 Series Models

Because we continually examine ways to improve our products, we reserve the right to alter specifications or discontinue products without prior notice.

EASY SET™ PATENTED QUICK CHANGE TOOL

The innovative, Easy Set™ Patented Quick Change Tool provides a quicker, easier and safer way to change out crimp dies. Traditional quick change tools must be manually centered and carefully held in place during the die changing process. Even a slight misalignment could cause the dies to be slightly out of place, potentially causing costly damage to the dies or the machine itself. However, the Easy Set™ Quick Change Tool's patented centering guides hold the tool in the correct position throughout the die changing process with minimal user effort, eliminating the risk of user error.



Master dies are guided through built-in channels on the tool on mid-sized crimpers.



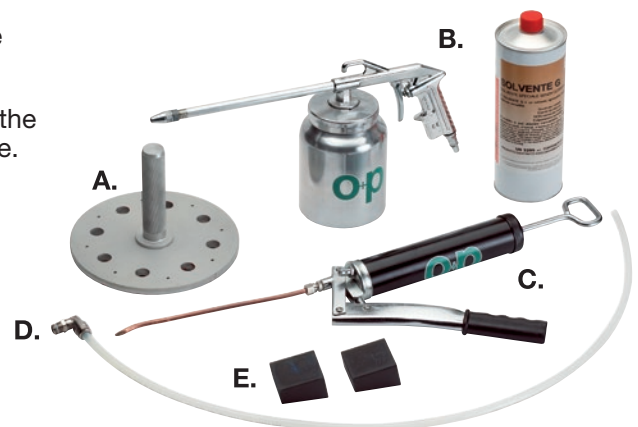
Tool held in place by built-in locking posts inserted into the crimper on smaller and larger sized crimpers.

CLEANING AND LUBRICATION KIT

Available for the KC1-H130, KC3-H130, KC1-H135, KC3-H135, KC3-H144 & KC3-H170.

Proper crimper maintenance will extend the life of your machine. This involves routinely changing out the used oil, as well as cleaning and lubricating beneath the master dies. This process can be quite messy and time consuming, however the Cleaning and Lubrication Kit includes all the tools necessary for a quick and easy process that can be completed in under 30 minutes.

- A. Master Die Extending Tool** – Holds the master dies in a position slightly pulled away from the cylinder, allowing access to the area beneath for cleaning and lubricating.
- B. Spray Gun and Solvent** – Allows for easy spray cleaning beneath the master dies.
- C. Lubrication Gun** – Allows for easy lubricating beneath the master dies.
- D. Oil Drain Hose** – Connects to an opening on the bottom of the hydraulic cylinder, providing a drain line for used oil.
- E. Lifting Wedges** – Props the machine up from behind, draining the used oil through the front of the machine through the drain hose.



Part Number	Works with Crimpers
CALKIT-H130	KC1-H130 & KC3-H130
CALKIT-H135	KC1-H135 & KC3-H135
CALKIT-H144/170	KC3-H144 & KC3-H170

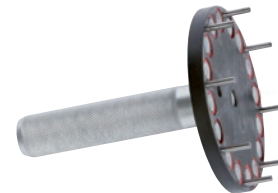
Because we continually examine ways to improve our products, we reserve the right to alter specifications or discontinue products without prior notice.

Quick Change Tools (QCT)



Die Change Tool

Part Number	Works with Crimpers
KCDCT-H39	KC1-H47E, KC1-H47PM & KC1-H47PI



Quick Change Tool

Part Number	Works with Crimpers
KCQCT-H69	KC1-H83, KC3-H88 & KC4-V59
KCQCT-H119	KC1-H130, KC3-H130, KC1-H135, KC3-H135, KC3-H170, KC3-H144, KC4-V150, KC4-V159, KC4-V160, KC4-V250, KC4-V300 & KC4-V450



Patented Quick Change Tool

Part Number	Works with Crimpers
KCPQCT-H69	KC1-H83 & KC3-H88



Patented Quick Change Tool

Part Number	Works with Crimpers
KCPQCT-H130	KC1-H130, KC3-H130
KCPQCT-H135	KC1-H135, KC3-H135 & KC3-H144
KCPQCT-H170	KC3-H170



Patented Quick Change Tool

Part Number	Works with Crimpers
KCPQCT-V59	KC4-V59
KCPQCT-V159	KC4-V150, KC4-V159
KCPQCT-V160	KC4-V160
KCPQCT-V250	KC4-V250

Foot Pedals



Electric Foot Pedal

Part Number	Works with Crimpers
PEDAL-KC1	All KC1 Series models*

*Standard Volume Crimpers only



Electric Foot Pedal

Part Number	Works with Crimpers
PEDAL-ES	All KC3 & KC4 Series models

Because we continually examine ways to improve our products, we reserve the right to alter specifications or discontinue products without prior notice.

Die Racks



Die Rack

Part Number	Works with Crimpers
DIERACK-H69	KC1-H83 KC3-H88 KC4-V59



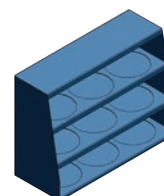
Die Rack

Part Number	Works with Crimpers
DIERACK-H119	KC1-H130 KC3-H130 KC1-H135 KC3-H135 KC3-H144 KC3-H170



Die Cart

Part Number	Works with Crimpers*
DIECART-V119	KC4-V150 KC4-V159 KC4-V160 KC4-V250 KC4-V300 KC4-V450



Die Rack

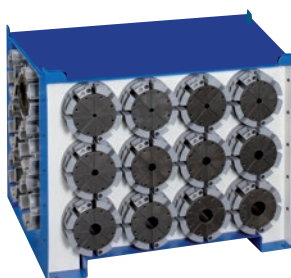
Part Number	Works with Crimpers
DIERACK-J67	KC2-J67

Die Bases



Die Base (12 PC.)

Part Number	Works with Crimpers
DIEBASE-H69	KC1-H83 & KC3-H88



Die Base (18 PC.)

Part Number	Works with Crimpers
DIEBASE-H130	KC1-H130
DIEBASE-H119	KC3-H130, KC1-H135, KC3-H135, KC3-H144 & KC3-H170



Die Base

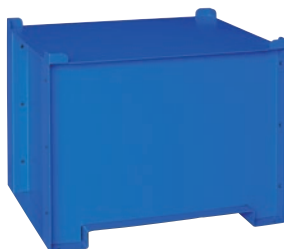
Part Number	Works with Crimpers
DIEBASE-J67	KC2-J67

Standard Bases



Base

Part Number	Works with Crimpers
KC1-H47E-BASE	KC1-H47E



Base

Part Number	Works with Crimpers
BASE-H69	KC1-H83 & KC3-H88
BASE-H130	KC1-H130
BASE-H119	KC3-H130, KC1-H135, KC3-H135, KC3-H144 & KC3-H170

* **Note:** The DIECART-V119 will also work with H Series standard volume crimpers using H119 series dies.

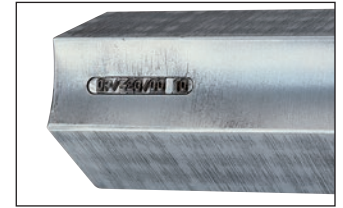
Because we continually examine ways to improve our products, we reserve the right to alter specifications or discontinue products without prior notice.

Marking Dies

Imprint your own custom message on the ferrule during the crimping process.

Create a standard branding message, or purchase your own set of letters, numbers, symbol and spacer blocks which can be arranged and rearranged in any manner to create various messages, or date codes for hose traceability.

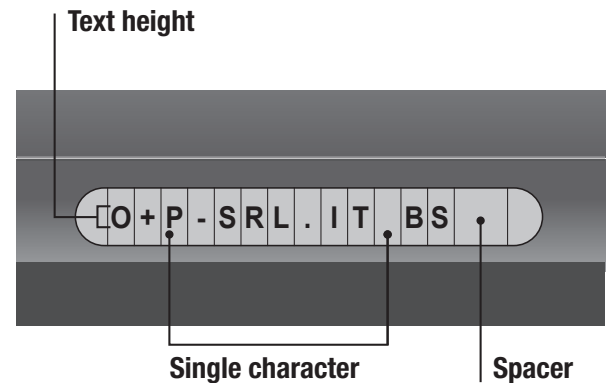
Available for all Standard Volume and High Volume Crimpers.



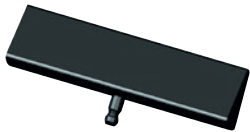
Imprint your own custom message on ferrule during the crimping process. Letter blocks can be rearranged for customization.

Available Sizes

Die Size (mm)	Text Height (mm)
12 & 14	1.5
16, 19, 22, 25 & 29	2
34, 38, 42, 46, 50, 54, 58, 63, 69 & 73	3
103, 106, 111, 116, 121, 126 & 131	4



Special Dies



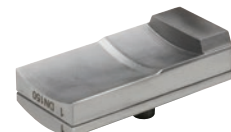
Interlock Dies

Longer length for interlock ferrules



Custom Sizes and Shapes

Custom on request



Stepped Dies with Profile

Custom on request

Thread Checkers



Thread Gauge Set PN# KCIDP-BSPJICMET

- BSP & JIC Metric
- Easily identify 26 common sizes
- Display stand



Thread Gauge Set PN# KCIDP-ORFSDIN

- ORFS & DIN
- Easily identify 28 common sizes
- Display stand



Thread ID Kit PN# KC-IDKIT

- Includes caliper, ruler, thread gauges and case
- Requires LR44H battery (not included)

Because we continually examine ways to improve our products, we reserve the right to alter specifications or discontinue products without prior notice.

The following chart lists the corresponding die based on hose type and size in order to assist with your die selection process.

Hydraulic Hose Assemblies using One-Piece Fittings

Hose Type	Hose Size (in)	3/16	1/4	5/16	13/32	3/8	1/2	5/8	3/4
	Fitting Type	Die Size (mm)							
TR1MT	B or D	14	16	19		19	22	25	29
TR2MT	B or D		16	19		22	25	25	29
TF2MT/ST/LT	B		16	19		19	25	25	29
AT3KMT/ST	B		16			19	22	25	29
ABT3K	D								
ABT4K	D or F					22	25	29	34
ABT5K/ST	F								34
ABT6K/ST	F								34
TAJ3/TAJ5	B		16	16/19		19	22		

Hydraulic Hose Assemblies using Two-Piece Fittings

Hose Type	Hose Size (in)	3/16	1/4	5/16	13/32	3/8	1/2	5/8	3/4
	Fitting Type	Die Size (mm)							
TR1MT	A (AF1)	14	16	16		19	22	25	29
TR2MT	A (AF2)		16	19		22	25	25	29
TF2MT/ST/LT	A (AF1)		16	16		19	25	25	29
AT3KMT/ST	A (AF1)		16			19	22	25	29
ABT3K	A (AF4)								
ABT4K	A (AF4)					22	25	29	34
TR5/TT	A (AFX)	16	16	19	22		25	29	
TR14TB	A (AFT)	10	12	14		16	19	22	25
PF267/NC	A (PFR)	12	14	14		16	22		29
PF354/NC	A (PFR)	12	14	14		16	22		29
PF528/NC	A (AFX)		16			20	24		31
PF628/NC	A (PFR)		12			16	22		29
T634AA	A (AFX)								31/34
TAJ3/TAJ5	A (AF1)		16	16/19		19	22		

Industrial Hose Assemblies*

Hose Type	Hose Size (in)	1	1 1/4	1 1/2	2	2 1/2	3
	Fitting Type	Die Size (mm)					
Industrial (Tigerflex)	Aluminum C&E's	34	42	46	63	77	96
Industrial (Alfagomma)	Aluminum C&E's	34	42	46	58	73	90

*Die size may vary based on hose type.

Because we continually examine ways to improve our products, we reserve the right to alter specifications or discontinue products without prior notice.

Hydraulic Hose Assemblies using One-Piece Fittings

Hose Type	Hose Size (in)	7/8	1	1-1/8	1 1/4	1-3/8	1 1/2	1-13/16	2
	Fitting Type	Die Size (mm)							
TR1MT	B or D		38		46				69
TR2MT	B or D		38		50				69
TF2MT/ST/LT	B		38		46				
AT3KMT/ST	B		38						
ABT3K	D				50		58		73
ABT4K	D or F		42		50				73
ABT5K/ST	F		42		54		60		77
ABT6K/ST	F		42		54				
TAJ3/TAJ5	B								

Hydraulic Hose Assemblies using Two-Piece Fittings

Hose Type	Hose Size (in)	7/8	1	1-1/8	1 1/4	1-3/8	1 1/2	1-13/16	2
	Fitting Type	Die Size (mm)							
TR1MT	A (AF1)		38		46		54		63
TR2MT	A (AF2)		38		46		54		69
TF2MT/ST/LT	A (AF1)		38		46		54		63
AT3KMT/ST	A (AF1)		38						
ABT3K	A (AF4)				50		58		
ABT4K	A (AF4)		42		50				
TR5/TT	A (AFX)	34		42		46		60	
TR14TB	A (AFT)		34						
PF267/NC	A (PFR)								
PF354/NC	A (PFR)								
PF528/NC	A (AFX)								
PF628/NC	A (PFR)								
T634AA	A (AFX)		38		42/46		50		63
TAJ3/TAJ5	A (AF1)								

Industrial Hose Assemblies*

Hose Type	Hose Size	4	5	6	8	10	12
	Fitting Type	Die Size (mm)					
Industrial (Tigerflex)	Aluminum C&E's	121	146	166	235		
Industrial (Alfagomma)	Aluminum C&E's	111	136	166	220		

*Die size may vary based on hose type.

Because we continually examine ways to improve our products, we reserve the right to alter specifications or discontinue products without prior notice.

Determining whether a particular crimper has the capacity to handle the user's required range of hoses requires understanding that the primary limiting factor for crimping hydraulic hose is crimper tonnage, whereas industrial hose is limited by the diameter of the crimper opening.*

A crimper's capacity can be understood in multiple ways: Hose Capacity, Maximum Opening with Dies, Opening by Die Size and Maximum Opening without Dies.

Hose Capacity – This value represents the largest hose that can be crimped depending on hose type, whether 1-2 wire, 4 spiral, 6 spiral or industrial. With hydraulic hose assemblies the Hose Capacity specification is sufficient to determine crimper suitability, as it generally is for industrial hose assemblies.

However, with industrial hose assemblies the crimper opening diameter must also be taken into consideration. The crimper may not be able to handle the stated hose size when larger than normal industrial couplings, such as ball and socket, bent and flanged couplings, are used. Additionally, the crimper may exceed the stated hose size when smaller fitting such as nipples and sanitary fittings are used.

Maximum Opening with Dies – This value represents the diameter of the crimper opening in its fully open position, with its largest die set inserted. This value is important as it provides the maximum opening dimension available when performing multiples of the same crimp (meaning the same crimp die is being used repeatedly).

Therefore, to determine whether a crimper can make a particular industrial hose assembly, you must first determine the largest outside diameter of the couplings being used, which for KOA Couplings can be found on pages 45-47. From that information, it can be determined if the crimper opening is large enough for the coupling to pass through.

Opening by Die Size – This value represents the diameter of the crimper opening relative to the particular die set being used. It's expressed as the sum of the die set size being used plus a particular value. Naturally, there's a smaller opening when doing smaller diameter crimps and vice versa.

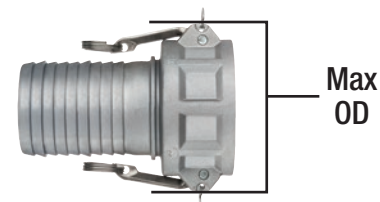
For example, the Opening by Die Size for the KC3-H170 is "die size + 61 mm", therefore if I'm crimping a 2" Tigerflex hose using a 63 mm die, my opening is $63\text{ mm} + 61\text{ mm} = 124\text{ mm}$, I can now compare that value to my fitting dimension; if I'm using a 2" female cam lock I can see from page 45 that with its maximum diameter of 97.2 mm it will easily pass through the 124 mm opening with the 63 mm dies in place.

Maximum Opening without Dies – This value represents the diameter of the crimper opening in its fully opened position without any dies inserted, and is the absolute largest possible diameter of the crimper opening. In instances when the operator needs to pass a larger coupling through the crimper opening, it can be done so before the crimp dies are added. This method allows for the use of larger couplings, but is not efficient for performing multiples of the same crimp, as the crimping dies must be individually added and removed each time.

*** Crimper tonnage can also be a limiting factor on heavier duty industrial hose and couplings. Contact Kuriyama Customer Service if any doubt exists.**

Because we continually examine ways to improve our products, we reserve the right to alter specifications or discontinue products without prior notice.

These charts list the maximum outside dimension of various KOA Couplings in order to assist with determining whether the coupling will fit through the crimper opening.



Camlock, Female

AL-C, BR-C, SS-C, SS304-C, PPC & GRC Series*

Size (in)	OD of Largest Dim. (mm)
1/2	38.5
3/4	52.6
1	62.2
1 1/4	80.2
1 1/2	87.8
2	97.2
2 1/2	109.9
3	137.1
4	165.0
5	191.1
6	240.0
8	289.0
10	327.0

Camlock, Male

AL-E, BR-E, SS-E, SS304-E, PPE & GRE Series*

Size (in)	OD of Largest Dim. (mm)
1/2	30.2
3/4	34.0
1	40.0
1 1/4	50.0
1 1/2	60.0
2	68.0
2 1/2	82.0
3	100.0
4	130.0
5	154.0
6	183.0
8	231.0
10	263.0

Ball & Socket, Female (Type B)

SLB-FH Series*

Size (in)	OD of Largest Dim. (mm)
2	83.0
3	117.0
4	166.0
6	159.0
8	267.0
10	346.0
12	401.0

Ball & Socket, Male (Type B)†

SLB-MH Series with SLB-LR Lever Handle*

Size (in)	OD of Largest Dim. (mm)
2	158.0
3	190.0
4	295.0
6	320.0
8	380.0
10	485.0
12	528.0

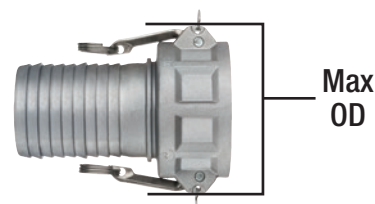
†Measured over locking ring

* For additional information on these products refer to the Kuriyama Couplings Catalog or www.kuriyama.com

Because we continually examine ways to improve our products, we reserve the right to alter specifications or discontinue products without prior notice.

KOA Coupling Fitting OD's

These charts list the maximum outside dimension of KOA Couplings in order to assist with determining whether the coupling will fit through the crimper opening.



Ball & Socket, Female (Type A)

SLA-FH Series*

Size (in)	OD of Largest Dim. (mm)
10	492.0
12	600.0

Ball & Socket, Male (Type A)

SLA-MH Series*

Size (in)	OD of Largest Dim. (mm)
10	358.0
12	446.0

Sanitary, Tri-Clamp

TCS-SS Series*

Size (in)	OD of Largest Dim. (mm)
1	50.5
1 1/2	50.5
2	64.0
2 1/2	77.5
3	91.0
4	119.0

Sanitary, I-Line

FILS-SS & MILS-SS Series*

Size (in)	OD of Largest Dim. (mm)
1 1/2	50.8
2	67.0
2 1/2	84.0
3	98.5
4	123.9

Sanitary Bevel Seat, Female†

FBS-SS Series with HNS Hex Nut*

Size (in)	OD of Largest Dim. (mm)
1	46.0
1 1/2	61.1
2	76.2
2 1/2	91.3
3	106.4
4	137.6

Sanitary Bevel Seat, Male

MBS-SS Series*

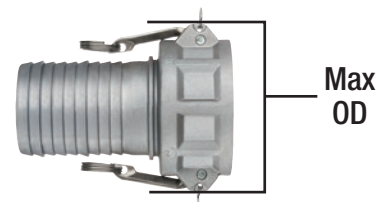
Size (in)	OD of Largest Dim. (mm)
1	37.1
1 1/2	50.7
2	64.2
2 1/2	77.7
3	91.2
4	119.3

*Measured over nut OD

* For additional information on these products refer to the Kuriyama Couplings Catalog or www.kuriyama.com

Because we continually examine ways to improve our products, we reserve the right to alter specifications or discontinue products without prior notice.

These charts list the maximum outside dimension of KOA Couplings in order to assist with determining whether the coupling will fit through the crimper opening.



Nipples

STN, SPN, HEX-STN, HEX, SPN, GEN, SSN304, SSN, PPN and GRN Series*

Size (in)	OD of Largest Dim. (mm)
1/2	21.3
3/4	26.7
1	33.4
1 1/4	42.2
1 1/2	48.3
2	60.3
2 1/2	73.1
3	101.6
4	114.3
6	168.3
8	219.1
10	273.0
12	323.8

Pin Lugs, Female†

AB, BB, ABF, FHNST and FHNST-F Series*

Size (in)	OD of Largest Dim. (mm)
1 1/2	81.0
2	90.6
2 1/2	114.5
3	123.0
4	157.0
6	216.8

†Measured over swivel nut

Concrete Couplings

CHC-CA Series*

Size (in)	OD of Largest Dim. (mm)
2	88.9
2 1/2	108.0
3	127.0
4	159.0
5	193.8

Ground Joints, Female†

GJ & SHGJ-CR Series with Wingnut*

Size (in)	OD of Largest Dim. (mm)
1/2	59.5
3/4	89.0
1	111.8
1 1/4	111.8
1 1/2	145.5
2	145.5
2 1/2	180.0
3	204.5
4	242.0

†Measured over wingnut OD

Ground Joints, Male

GJM & D-XXXX-MNPT Series*

Size (in)	OD of Largest Dim. (mm)
1/2	21.8
3/4	27.7
1	34.2
1 1/4	41.6
1 1/2	45.8
2	58.9
2 1/2	73.0
3	87.9
4	113.3

* For additional information on these products refer to the Kuriyama Couplings Catalog or www.kuriyama.com

Because we continually examine ways to improve our products, we reserve the right to alter specifications or discontinue products without prior notice.

Bench Mounted



	KCS-TF1/E	KCS-TF2/E	KCS-TF3/E	KCS-TF4/E
Max. Capacity 1-2 Wire Braided (in)	1 1/4	2	2	3
Max. Capacity 4 Spiral (in)	1 1/4	2	2	3
Max. Capacity 6 Spiral (in)	1	1 1/2	2	2
Max. Capacity Industrial (in)	2	2	2 1/2	4
Max. Opening (mm / in)	60 / 2.36	75 / 2.95	85 / 3.35	130 / 5.12
Blade Diameter (mm)	250	250	350	400
Power	1.5 HP (110 V)	4.0 HP (230 V)	4.0 HP (230 V)	5.5 HP (230 V)
Page Number	49	50	51	52

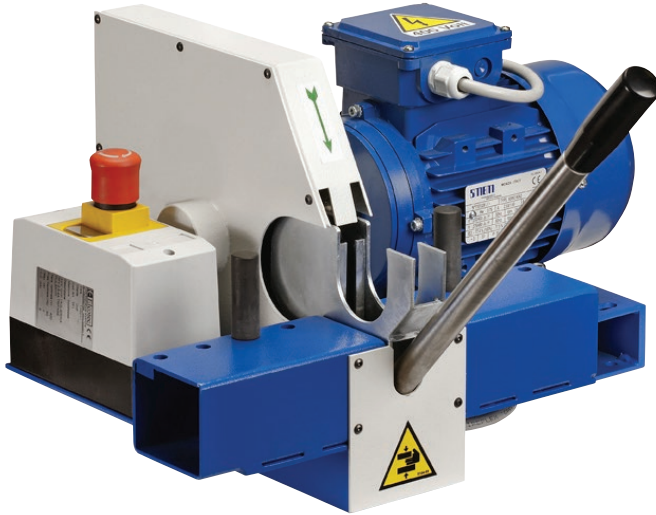
Stand Alone



	KCS-TF2	KCS-TF3	KCS-TF3/PI	KCS-TF4	KCS-TF5
Max. Capacity 1-2 Wire Braided (in)	2	3	3	3	3
Max. Capacity 4 Spiral (in)	2	2 1/2	2 1/2	2 1/2	2 1/2
Max. Capacity 6 Spiral (in)	1 1/2	2	2	2	2 1/2
Max. Capacity Industrial (in)	2	2 1/2	2 1/2	3	5*
Max. Opening (mm / in)	75 / 2.95	100 / 3.94	100 / 3.94	100 / 3.94	160 / 6.30
Blade Diameter (mm)	250	400	400	400	520
Power	4 HP (110 V)	7.5 HP (230 V)	7.5 HP (230 V)	7.5 HP (230 V)	10.0 HP (230 V)
Powered Foot Pedal	No	No	Yes	Yes	Yes
Low Smoke Emission	No	No	No	Yes	Yes
Page Number	53	54	55	56	57

* Dependent on hose type

KCS-TF1/E-110/1



Hose Capacity (in)		Motor Strength (HP)
1 – 2 Wire	1 1/4	1.5
4 SP / 6 SP	1 1/4 / 1	
Industrial	2	
Max opening (mm)	60	

Cutter Size	
L x W x H (in)	20.7 x 26.0 x 17.5
Weight (lbs)	66.1
Blade Diameter (mm)	250

Part Number	Motor Info
KCS-TF1/E-110/1	1.5 HP (110 V) 1 PH

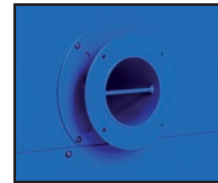
Description: A compact, bench mounted unit ideal for cutting 1 1/4" four spiral and 1" six spiral hydraulic hose.

Suggested for pairing with KC1-H83 and KC3-H88 series crimpers.

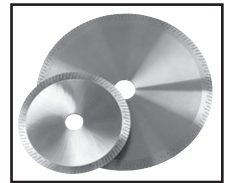
Included Accessories:



Recessed Blade



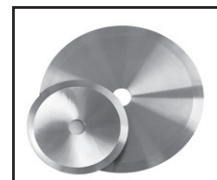
Ventilation Port*



Serrated Blade
BLADE-SER250

* Separate suction device required for fume extraction

Optional Accessories:



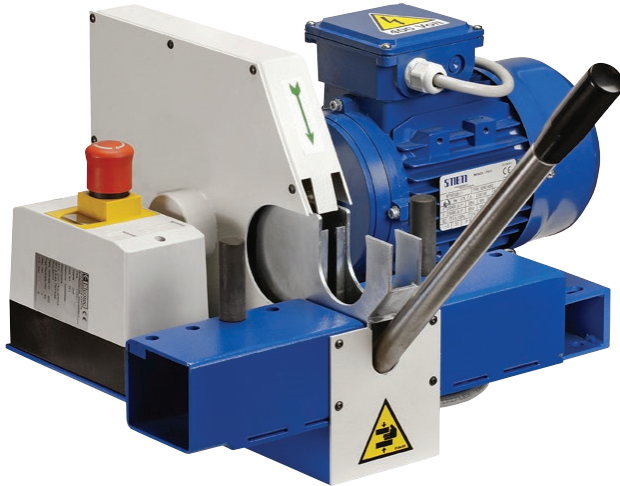
Smooth Blade
BLADE-SMT250



Diamond Blade
BLADE-DIA250

Because we continually examine ways to improve our products, we reserve the right to alter specifications or discontinue products without prior notice.

KCS-TF2/E Series



Hose Capacity (in)		Motor Strength (HP)
1 – 2 Wire	2	4
4 SP / 6 SP	2 / 1 1/2	
Industrial	2	
Max opening (mm)	75	

Cutter Size	
L x W x H (in)	25.6 x 27.6 x 16.5
Weight (lbs)	97
Blade Diameter (mm)	250

Part Number	Motor Info
KCS-TF2/E-230/1	4 HP (230 V) 1 PH
KCS-TF2/E-230/3	4 HP (230 V) 3 PH

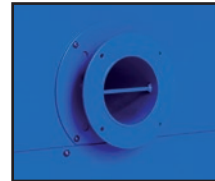
Description: A compact, bench mounted unit ideal for cutting 2" four spiral and 1 1/2" six spiral hydraulic hose.

Ideal for use with KC1-H130 series crimpers.

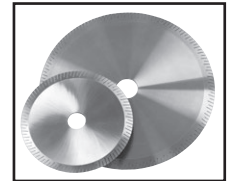
Included Accessories:



Recessed Blade



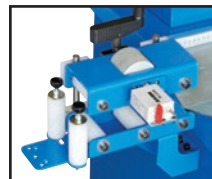
Ventilation Port*



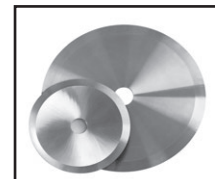
Serrated Blade
BLADE-SER250

* Separate suction device required for fume extraction

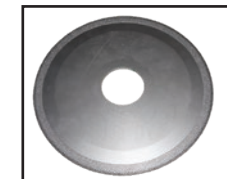
Optional Accessories:



Centering &
Measuring Device
CENTER-KCS



Smooth Blade
BLADE-SMT250



Diamond Blade
BLADE-DIA250

KCS-TF3/E Series

Hose Capacity (in)	Motor Strength (HP)
1 – 2 Wire	2
4 SP / 6 SP	2 / 2
Industrial	2 1/2
Max opening (mm)	85

Cutter Size	
L x W x H (in)	30.0 x 20.9 x 20.1
Weight (lbs)	130
Blade Diameter (mm)	350

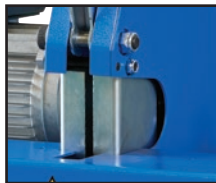
Part Number	Motor Info
KCS-TF3/E-230/1	4 HP (230 V) 1 PH
KCS-TF3/E-230/3	4 HP (230 V) 3 PH

Description: A stand alone unit ideal for cutting 2" four spiral and six spiral hydraulic hose. The blade is recessed inside the base for additional safety.

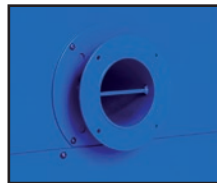
Suggested for use with KC1-H135 series crimpers.



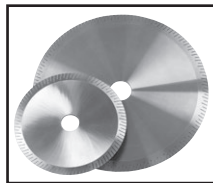
Included Accessories:



Recessed Blade



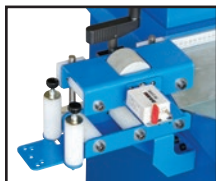
Ventilation Port*



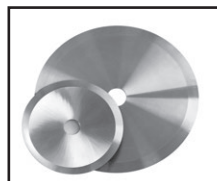
Serrated Blade
BLADE-SER350

* Separate suction device required for fume extraction

Optional Accessories:



Centering &
Measuring Device
CENTER-KCS



Smooth Blade
BLADE-SMT350



Diamond Blade
BLADE-DIA350

Because we continually examine ways to improve our products, we reserve the right to alter specifications or discontinue products without prior notice.

KCS-TF4/E-230/1



Hose Capacity (in)		Motor Strength (HP)
1 – 2 Wire	3	5.5
4 SP / 6 SP	3 / 2	
Industrial	4	
Max opening (mm)	130	

Cutter Size	
L x W x H (in)	45.3 x 26.0 x 26.3
Weight (lbs)	187.4
Blade Diameter (mm)	400

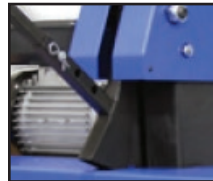
Part Number	Motor Info
KCS-TF4/E-230/1	5.5 HP (230 V) 1 PH

Description: Ideal for industrial hoses, cutting up to 4" ID. Can be placed on the ground, eliminating the need to lift heavy hoses.

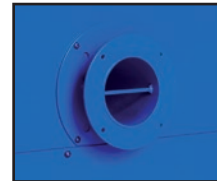
Diamond blade included in order to cut through heavy walled hoses or ones with steel helical reinforcement.

Ideal for use with KC3-H144 or KC3-H170 series crimpers.

Included Accessories:



Recessed Blade



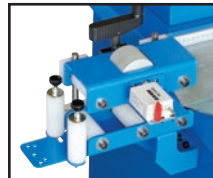
Ventilation Port*



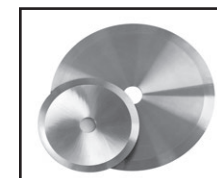
Diamond Blade
BLADE-DIA400

* Separate suction device required for fume extraction

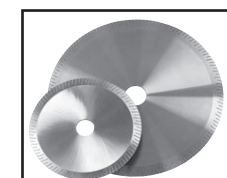
Optional Accessories:



Centering &
Measuring Device
CENTER-KCS



Smooth Blade
BLADE-SMT400



Serrated Blade
BLADE-SER400

KCS-TF2-230/3

Hose Capacity (in)		Motor Strength (HP)
1 – 2 Wire	2	4
4 SP / 6 SP	2 / 1 1/2	
Industrial	2	
Max opening (mm)	75	

Cutter Size	
L x W x H (in)	33.1 x 21.7 x 45.3
Weight (lbs)	290
Blade Diameter (mm)	250

Part Number	Motor Info
KCS-TF2-230/3	4 HP (230 V) 3 PH

Description: A stand alone unit ideal for cutting 2" four spiral and 1 1/2" six spiral hydraulic hose. The blade is recessed inside the base for additional safety.

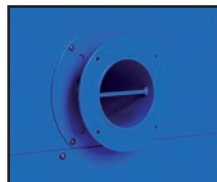
Suggested for use with KC3-H130 series crimpers.



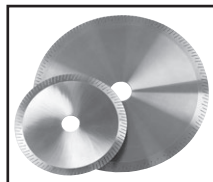
Included Accessories:



Enclosed Blade Chamber



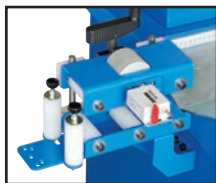
Ventilation Port*



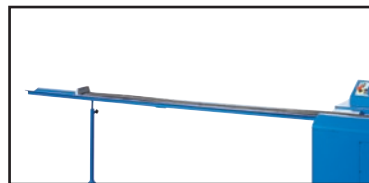
Serrated Blade
BLADE-SER250

* Separate suction device required for fume extraction

Optional Accessories:



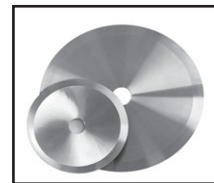
Centering & Measuring Device
CENTER-KCS



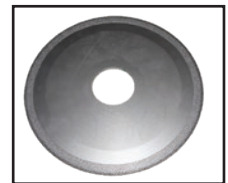
Measuring Hose Tray
TRAY-KCS



Stroke Counter
STROKE-KCS



Smooth Blade
BLADE-SMT250



Diamond Blade
BLADE-DIA250

Because we continually examine ways to improve our products, we reserve the right to alter specifications or discontinue products without prior notice.

KCS-TF3-230/3



Hose Capacity (in)		Motor Strength (HP)
1 – 2 Wire	3	7.5
4 SP / 6 SP	2 1/2 / 2	
Industrial	2 1/2	
Max opening (mm)	100	

Cutter Size	
L x W x H (in)	39.4 x 28.0 x 45.3
Weight (lbs)	419
Blade Diameter (mm)	400

Part Number	Motor Info
KCS-TF3-230/3	7.5 HP (230 V) 3 PH

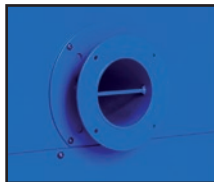
Description: A stand alone unit ideal for cutting 3" two wire hose and 2" six spiral hydraulic hose. The blade is recessed inside the base for additional safety.

Suggested for use with KC3-H135 series crimpers.

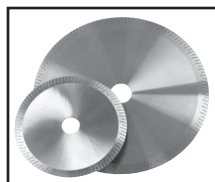
Included Accessories:



Enclosed Blade Chamber



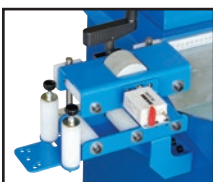
Ventilation Port*



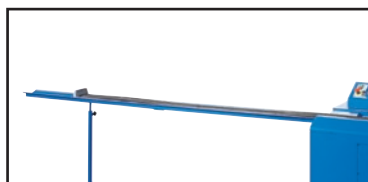
Serrated Blade
BLADE-SER400

* Separate suction device required for fume extraction

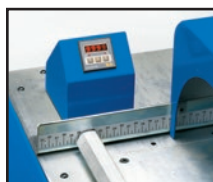
Optional Accessories:



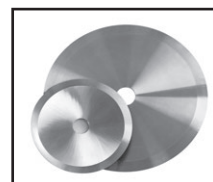
Centering & Measuring Device
CENTER-KCS



Measuring Hose Tray
TRAY-KCS



Stroke Counter
STROKE-KCS



Smooth Blade
BLADE-SMT400



Diamond Blade
BLADE-DIA400

Because we continually examine ways to improve our products, we reserve the right to alter specifications or discontinue products without prior notice.

KCS-TF3/PI-230/3

Hose Capacity (in)	Motor Strength (HP)
1 – 2 Wire 3	7.5
4 SP / 6 SP 2 1/2 / 2	
Industrial 2 1/2	
Max opening (mm) 100	

Cutter Size	
L x W x H (in)	40.4 x 27.6 x 45.3
Weight (lbs)	530
Blade Diameter (mm)	400

Part Number	Motor Info
KCS-TF3/PI-230/3	7.5 HP (230 V) 3 PH



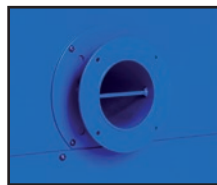
Description: A stand alone unit ideal for cutting 2" six spiral hydraulic hose. The blade is recessed inside the base for additional safety. Uses 100 PSI pneumatic input control.

Suggested for use with KC3-H135 series crimpers.

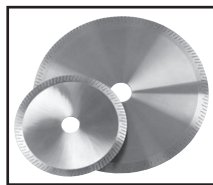
Included Accessories:



Enclosed Blade Chamber



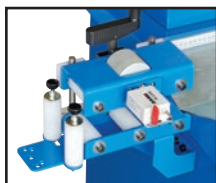
Ventilation Port*



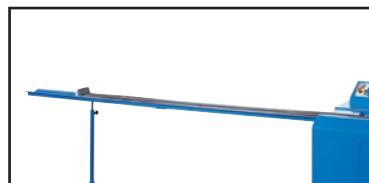
Serrated Blade
BLADE-SER400

* Separate suction device required for fume extraction

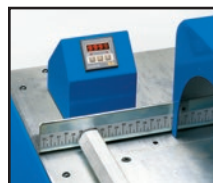
Optional Accessories:



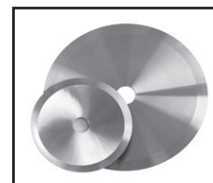
Centering & Measuring Device
CENTER-KCS



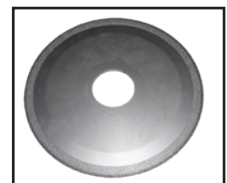
Measuring Hose Tray
TRAY-KCS



Stroke Counter
STROKE-KCS



Smooth Blade
BLADE-SMT400



Diamond Blade
BLADE-DIA400

Because we continually examine ways to improve our products, we reserve the right to alter specifications or discontinue products without prior notice.

KCS-TF4-230/3



Hose Capacity (in)		Motor Strength (HP)
1 – 2 Wire	3	7.5
4 SP / 6 SP	2 1/2 / 2	
Industrial	3	
Max opening (mm)	100	

Cutter Size	
L x W x H (in)	44.0 x 23.8 x 57.2
Weight (lbs)	717
Blade Diameter (mm)	400

Part Number	Motor Info
KCS-TF4-230/3	7.5 HP (230 V) 3 PH

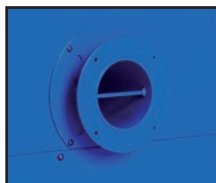
Description: Cuts up to 2" six spiral hoses. Blade chamber is completely recessed in the body of the unit allowing for more efficient ventilation.

Suggested for use with KC4-V150 and KC4-V159 series crimpers.

Included Accessories:



Recessed Blade Chamber



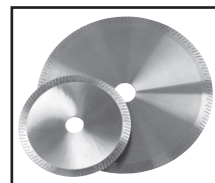
Ventilation Port



Electrical Foot Pedal

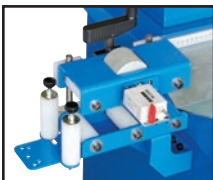


Stroke Counter

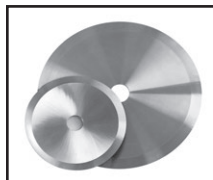


Serrated Blade
BLADE-SER400

Optional Accessories:



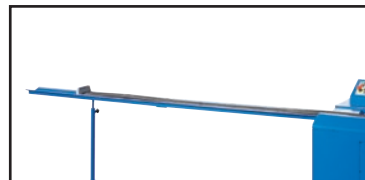
Centering &
Measuring Device
CENTER-KCS45



Smooth Blade
BLADE-SMT400



Diamond Blade
BLADE-DIA400



Measuring Hose Tray
TRAY-KCS4



Blowing Kit
BLKIT-KCS45



Fume Extractor
FUME-KCS4

* Separate suction device required for fume extraction

Because we continually examine ways to improve our products, we reserve the right to alter specifications or discontinue products without prior notice.

KCS-TF5-230/3

Hose Capacity (in)	Motor Strength (HP)
1 – 2 Wire	3
4 SP / 6 SP	2 1/2
Industrial	5*
Max opening (mm)	160

*Dependent on hose type

Cutter Size	
L x W x H (in)	41.9 x 40.2 x 30.3
Weight (lbs)	783
Blade Diameter (mm)	520

Part Number	Motor Info
KCS-TF5-230/3	10 HP (230 V) 3 PH

Description: Available as either stand alone or bench mounted. Ideal for cutting 2 1/2" six spiral hydraulic hose and 5" industrial hose. The blade is recessed inside the base for additional safety.

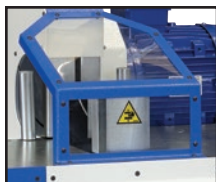
Suggested for use with KC4-V160 series crimpers.



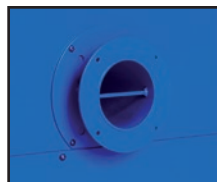
**Low
Smoke**

Base sold
separately

Included Accessories:



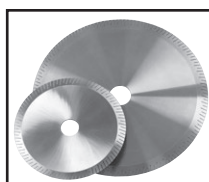
Recessed Blade



Ventilation Port



Electric Foot
Pedal

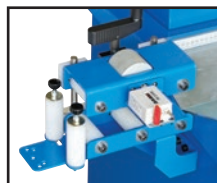


Serrated Blade
BLADE-SER520

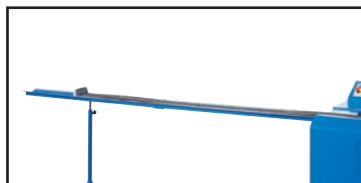
Optional Accessories:



Base
BASE-KCS5



Centering &
Measuring Device
CENTER-KCS45



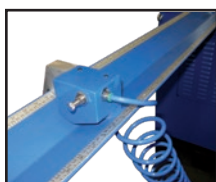
Measuring Hose Tray
TRAY-KCS5



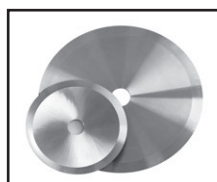
Stroke Counter
STROKE-KCS5



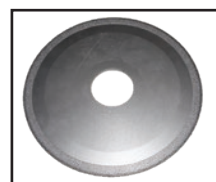
Fume Extractor
FUME-KCS5



Blowing Kit
BLKIT-KCS45



Smooth Blade
BLADE-SMT520



Diamond Blade
BLADE-DIA520

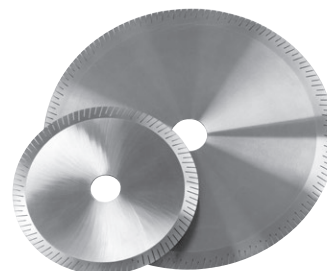
Because we continually examine ways to improve our products, we reserve the right to alter specifications or discontinue products without prior notice.

BLADE-SER Series

Serrated Replacement Blade

- Serrations help dissipate heat, extending blade life and reducing smoke generation.
- Acceptable for use with textile reinforced hoses.
- Not for use with hoses containing steel, helical reinforcement.

Part Number	Outside Dia. (mm)	Inside Dia. (mm)	Thickness (mm)
BLADE-SER250	250	40	3
BLADE-SER350	350	50	3
BLADE-SER400	400	50	4
BLADE-SER520	520	50	4

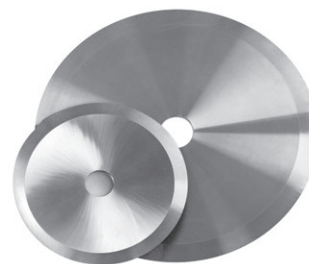


BLADE-SMT Series

Smooth Replacement Blade

- Acceptable for use with hoses containing steel, helical reinforcement.

Part Number	Outside Dia. (mm)	Inside Dia. (mm)	Thickness (mm)
BLADE-SMT250	250	40	3
BLADE-SMT350	350	50	3
BLADE-SMT400	400	50	4
BLADE-SMT520	520	50	4

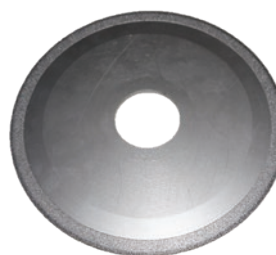


BLADE-DIA Series

Diamond Replacement Blade

- Durable diamond coating greatly extends blade life.
- Acceptable for use with hoses containing steel, helical reinforcement.

Part Number	Outside Dia. (mm)	Inside Dia. (mm)	Thickness (mm)
BLADE-DIA250	250	40	3
BLADE-DIA350	350	50	3
BLADE-DIA400	400	50	4
BLADE-DIA520	520	50	4



Cautionary Statements:

Blade sharpening should only be performed by the blade manufacturer. (Contact Kuriyama Customer Service for sharpening service details.)

Ensure direction of blade rotation is correct as indicated by the arrow printed on the blade.

When using a new blade or newly sharpened blade, make initial hose cuts at a low speed. A newly sharpened blade will cut very quickly, which at a high speed could lead to overheating, potentially damaging the blade.

- Do not operate at excessive speeds that could potentially overwork the motor.
- Do not move or rotate the hose during cutting.
- Do not apply any solvents or lubricants to the blade.

When replacing the blade inspect for signs of wear, that the shaft rotates without vibrations and that the blade is perfectly perpendicular to the cutting surface. Before starting, actuate the hose pressing lever to ensure no interferences.

Because we continually examine ways to improve our products, we reserve the right to alter specifications or discontinue products without prior notice.



**Part Number – HCMD
Medium Cutter**

- Medium Hose and Tubing Cutter
- Cuts up to 1 5/8" Hose and Tubing
- Weight 4.3 oz.



**Part Number – HCMD-BLADE
Replacement blade for Medium Cutter**
Medium Hose and Tubing Cutter



**Part Number – HCLG
Large Cutter**

- Large Hose - Tubing Cutter
- Cuts up to 1 7/8" OD Hose and Tubing
- Weight 5.0 oz



**Part Number – HCLG-BLADE
Replacement blade for Large Cutter**
Large Bundle - Hose - Tubing Cutter



**Part Number – HCRCT
One Handed Ratchet Hose Cutter**

- Cuts up to 2 1/2" OD Hoses
- Weight 1.4 lbs



**Part Number – HCRCT-BLADE
Replacement blade for One Handed Ratchet Cutter**
Large Bundle - Hose - Tubing Cutter

Because we continually examine ways to improve our products, we reserve the right to alter specifications or discontinue products without prior notice.

KPUSH2

Hydraulic Hose Pusher



Hose Capacity (in)	Pneumatic Input (psi)
2	100

Pusher Size	
L x W x H (in)	25.8 x 40.4 x 50.6
Weight (lbs)	214

Part Number
KPUSH2

Description: Pneumatically fed with a manual cycle and adjustable cylinder stroke pressure.

KPUSH3

Hydraulic Hose Pusher



Hose Capacity (in)	Pneumatic Input (psi)
3	100

Pusher Size	
L x W x H (in)	33.7 x 37.4 x 49.2
Weight (lbs)	518

Part Number	Motor Info
KPUSH3	230V 1 PH

Included Accessories:



Electric Foot Pedal

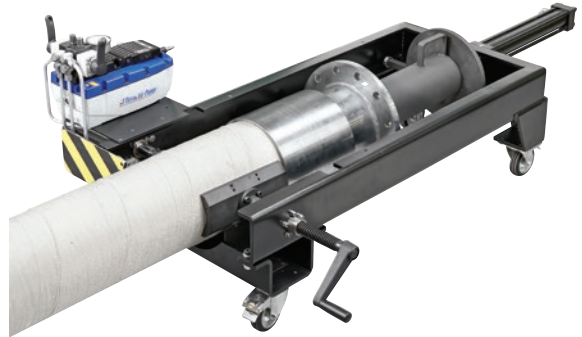
Description: Pneumatically fed with a semi-automatic cycle, self-centering vice and adjustable cylinder stroke and vice pressures.

Because we continually examine ways to improve our products, we reserve the right to alter specifications or discontinue products without prior notice.

Hose Capacity (in)	Push Force (lbs)
8	8,818
Max Coupling OD (in)	16.7
Pusher Size	
L x W x H (in)	44.3 x 69.7 x 24.6
Weight (lbs)	298
Part Number	
KPUSH8	Pump Info
	100 PSI

KPUSH8

Industrial Hose Pusher

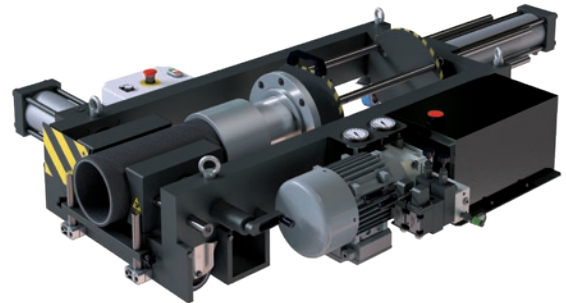


Description: An extremely powerful unit that is up to almost any task. Powered by a separate air pump, its clamping mechanism holds any size hose firmly in place during insertion.

Hose Capacity (in)	Push Force (lbs)
8	22,046
Max Coupling OD (in)	16.7
Pusher Size	
L x W x H (in)	49.2 x 71.9 x 13.8
Weight (lbs)	992
Part Number	
KPUSH22	Motor Info
	3 HP

KPUSH22

Concrete Hose Pusher



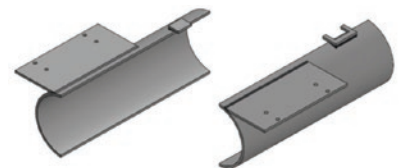
Description: Boasting 22,046 lbs of crimping force, the KPUSH22 is designed for difficult, heavy duty industrial hose such as concrete and petroleum hoses. Its clamping mechanism holds any size hose firmly in place during insertion.

Optional Accessories:

Part Number	Description	Hose ID (in)
PUSHJAWS22	Non-slip Hose Jaws	2 - 5
PUSHMAN200	Concrete Hose Mandrel	2
PUSHMAN250	Concrete Hose Mandrel	2 1/2
PUSHMAN300	Concrete Hose Mandrel	3
PUSHMAN350	Concrete Hose Mandrel	3 1/2
PUSHMAN400	Concrete Hose Mandrel	4
PUSHMAN500	Concrete Hose Mandrel	5



Concrete Hose
Mandrels



Non-Slip Hose Jaws

Because we continually examine ways to improve our products, we reserve the right to alter specifications or discontinue products without prior notice.

KSKIVE1

Hydraulic Hose Skiver



Description: A manually operated unit designed to fit in a vice. Its small size and light weight make it perfect for in shop or on site service. Tooling sold separately.

Blade on orbital portion of tool can be adjusted to accommodate different sizes hoses, meaning only the internal mandrel must be changed. Internal skive tools have cutting blade attached and must be changed out when switching between different sized hoses.

Hose Capacity (in)	
Internal Skiving	2
External Skiving	2

Skiver Size	
L x W x H (in)	18.9 x 9.5 x 3.9
Weight (lbs)	15

Part Number	
KSKIVE1	

Optional Accessories:



Mandrel Holder
Stand
MANDSTAND1

External Skiving Mandrels

Part Number	Description
KS-ESMAND-3	External skiving mandrel Ø 3/16"
KS-ESMAND-4	External skiving mandrel Ø 1/4"
KS-ESMAND-5	External skiving mandrel Ø 5/16"
KS-ESMAND-6	External skiving mandrel Ø 3/8"
KS-ESMAND-8	External skiving mandrel Ø 1/2"
KS-ESMAND-10	External skiving mandrel Ø 5/8"
KS-ESMAND-12	External skiving mandrel Ø 3/4"
KS-ESMAND-16	External skiving mandrel Ø 1"
KS-ESMAND-20	External skiving mandrel Ø 1 1/4"
KS-ESMAND-24	External skiving mandrel Ø 1 1/2"
KS-ESMAND-32	External skiving mandrel Ø 2"

Internal Skiving Mandrels with Cutting Blade

Part Number	Description
KS-ISMAND-8	Internal skiving mandrel Ø 1/2"
KS-ISMAND-10	Internal skiving mandrel Ø 5/8"
KS-ISMAND-12	Internal skiving mandrel Ø 3/4"
KS-ISMAND-16	Internal skiving mandrel Ø 1"
KS-ISMAND-20	Internal skiving mandrel Ø 1 1/4"
KS-ISMAND-24	Internal skiving mandrel Ø 1 1/2"
KS-ISMAND-32	Internal skiving mandrel Ø 2"

Because we continually examine ways to improve our products, we reserve the right to alter specifications or discontinue products without prior notice.

KSKIVE2 Hydraulic Hose Skiver

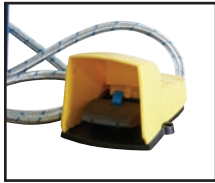
Hose Capacity (in)	
Internal Skiving	2
External Skiving	2
Skiver Size	
L x W x H (in)	26.6 x 21.1 x 17.2
Weight (lbs)	110
Part Number	Motor Info
KSKIVE2	1.0 HP (230 V) 1 PH 300 RPM



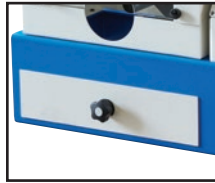
Description: A compact, motor driven unit for hoses up to 2". Includes foot pedal, shaving drawer and spots for eight mandrels.

Blade on orbital portion of tool can be adjusted to accommodate different sizes hoses, meaning only the internal mandrel must be changed. Internal skive tools have cutting blade attached and must be changed out when switching between different sized hoses.

Included Accessories:

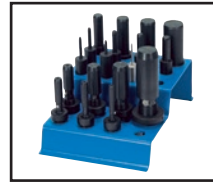


Electric Foot
Pedal



Shavings Drawer

Optional Accessories:



Mandrel Holder
Stand
MANDSTAND1

External Skiving Mandrels

Part Number	Description
KS-ESMAND-3	External skiving mandrel Ø 3/16"
KS-ESMAND-4	External skiving mandrel Ø 1/4"
KS-ESMAND-5	External skiving mandrel Ø 5/16"
KS-ESMAND-6	External skiving mandrel Ø 3/8"
KS-ESMAND-8	External skiving mandrel Ø 1/2"
KS-ESMAND-10	External skiving mandrel Ø 5/8"
KS-ESMAND-12	External skiving mandrel Ø 3/4"
KS-ESMAND-16	External skiving mandrel Ø 1"
KS-ESMAND-20	External skiving mandrel Ø 1 1/4"
KS-ESMAND-24	External skiving mandrel Ø 1 1/2"
KS-ESMAND-32	External skiving mandrel Ø 2"

Internal Skiving Mandrels with Cutting Blade

Part Number	Description
KS-ISMAND-8	Internal skiving mandrel Ø 1/2"
KS-ISMAND-10	Internal skiving mandrel Ø 5/8"
KS-ISMAND-12	Internal skiving mandrel Ø 3/4"
KS-ISMAND-16	Internal skiving mandrel Ø 1"
KS-ISMAND-20	Internal skiving mandrel Ø 1 1/4"
KS-ISMAND-24	Internal skiving mandrel Ø 1 1/2"
KS-ISMAND-32	Internal skiving mandrel Ø 2"

Because we continually examine ways to improve our products, we reserve the right to alter specifications or discontinue products without prior notice.

MULTICEN-MIN

Multifunctional / Tube Processing Center



Description: An economic, compact unit designed to carry out a multitude of the necessary functions for machining rigid hydraulic tubes, including bending, 24° ring preassembly, 37° flaring and deburring.



Bending



37° Flaring



Deburring



Preassembly

Included Accessories:



Handheld
Electronic Control



Tool Holder

Tube Materials:

Stainless (AISI 316 TI) or Carbon (ST37.4) Steel

Bending

Tube Diameter Range (in) 1/4 - 1 1/2

Tube Max. Width (in) 0.15

Max Bending Angle 170°

24° Preassembly

Tube Diameter Range (in) 0.236 - 1.654

Tube Max. Width (in) 0.15

37° Flaring

Tube Diameter Range (in) 1/4 - 1 1/2

Tube Max. Width (in) 0.158

Deburring

Tube Max. Size (in) 1/4 - 1 1/2

Multicenter Size

L x W x H (in) 28.4 x 36.2 x 51.0

Weight (lbs) 454

Part Number

MULTICEN-MIN-230/1

Motor Info

2.3 HP (230 V) 1 PH

Because we continually examine ways to improve our products, we reserve the right to alter specifications or discontinue products without prior notice.

MULTICEN-JR

Multifunctional / Tube Processing Center



Tube Materials:

Stainless (AISI 316 TI) or Carbon (ST37.4) Steel

Cutting

Maximum Diameter (in) 3.9

Bending

Tube Diameter Range (in) 1/4 - 1 1/2

Tube Max. Width (in) 0.15

Max Bending Angle 170°

24° Preassembly

Tube Diameter Range (in) 0.236 - 1.654

Tube Max. Width (in) 0.15

37° Flaring

Tube Diameter Range (in) 1/4 - 1 1/2

Tube Max. Width (in) 0.15

Deburring

Tube Max. Size (in) 1/4 - 1 1/2

Multicenter Size

L x W x H (in) 59.7 x 39.4 x 47.6

Weight (lbs) 670

Part Number

MULTICEN-JR-230/1

Motor Info

6.3 HP (230 V) 1 PH

Description: A well rounded unit, that includes all the same features of the MULTICEN-MIN: bending, 24° ring pre-assembly, 37° flaring and deburring, with the additional ability to perform tube cutting.

Also includes a small air compressor for cleaning shavings out of the inside of tubes.



Bending



37° Flaring



Deburring



Preassembly



Cutting

Included Accessories:



Handheld
Electronic Control



Tool Holder

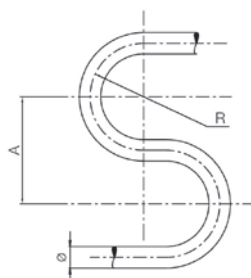


Tube Cleaning Air
Compressor

Because we continually examine ways to improve our products, we reserve the right to alter specifications or discontinue products without prior notice.

MULTICEN-MIN & MULTICEN-JR

Bending



Bending Tools for MULTICEN-MIN and MULTICEN-JR

Part Number	Description	Tubing OD (in)	Min. Bend Radius (in)	Max. Bend Angle (°)	A (mm)	B (mm)
BENDTOOL-JR-6	Bending Tool Ø 6 mm	6.0	15.0	170	60	70
BENDTOOL-JR-8	Bending Tool Ø 8 mm	8.0	16.5	170	60	70
BENDTOOL-JR-10	Bending Tool Ø 10 mm	10.0	27.5	170	70	115
BENDTOOL-JR-12	Bending Tool Ø 12 mm	12.0	32.5	170	80	120
BENDTOOL-JR-14	Bending Tool Ø 14 mm	14.0	46.0	170	110	180
BENDTOOL-JR-15	Bending Tool Ø 15 mm	15.0	46.0	170	110	180
BENDTOOL-JR-16	Bending Tool Ø 16 mm	16.0	48.0	170	110	180
BENDTOOL-JR-18	Bending Tool Ø 18 mm	18.0	48.0	170	110	190
BENDTOOL-JR-20	Bending Tool Ø 20 mm	20.0	66.0	170	140	230
BENDTOOL-JR-22	Bending Tool Ø 22 mm	22.0	66.0	160	140	240
BENDTOOL-JR-25	Bending Tool Ø 25 mm	25.0	81.5	160	170	270
BENDTOOL-JR-28	Bending Tool Ø 28 mm	28.0	81.0	160	180	300
BENDTOOL-JR-30	Bending Tool Ø 30 mm	30.0	98.5	150	220	300
BENDTOOL-JR-32	Bending Tool Ø 32 mm	32.0	101.0	150	220	300
BENDTOOL-JR-35	Bending Tool Ø 35 mm	35.0	125.5	120	250	440
BENDTOOL-JR-38	Bending Tool Ø 38 mm	38.0	116.0	120	250	440
BENDTOOL-JR-42	Bending Tool Ø 42 mm	42.0	126.0	120	250	440

Part Number	Description	Tubing OD (in)	Min. Bend Radius (in)	Max. Bend Angle (°)	A (mm)	B (mm)
BENDTOOL-JR-1/4	Bending Tool Ø 1/4"	1/4	0.65	170	2.36	2.76
BENDTOOL-JR-3/8	Bending Tool Ø 3/8"	3/8	1.08	170	2.76	4.53
BENDTOOL-JR-1/2	Bending Tool Ø 1/2"	1/2	1.28	170	3.15	4.72
BENDTOOL-JR-5/8	Bending Tool Ø 5/8"	5/8	1.88	170	4.33	7.09
BENDTOOL-JR-3/4	Bending Tool Ø 3/4"	3/4	1.88	170	4.33	7.09
BENDTOOL-JR-1	Bending Tool Ø 1"	1	3.20	160	6.69	10.63
BENDTOOL-JR-1 1/4	Bending Tool Ø 1 1/4"	1 1/4	3.97	150	8.66	11.81
BENDTOOL-JR-1 1/2	Bending Tool Ø 1 1/2"	1 1/2	4.56	120	9.84	17.32

Because we continually examine ways to improve our products, we reserve the right to alter specifications or discontinue products without prior notice.

Preassembly Sockets for MULTICEN-MIN and MULTICEN-JR

Part Number	Description	Tubing OD (mm)
PRESOCK-JR-6L	Light Preassembly Socket Ø 6 mm	6.0
PRESOCK-JR-6S	Heavy Preassembly Socket Ø 6 mm	6.0
PRESOCK-JR-8L	Light Preassembly Socket Ø 8 mm	8.0
PRESOCK-JR-8S	Heavy Preassembly Socket Ø 8 mm	8.0
PRESOCK-JR-10L	Light Preassembly Socket Ø 10 mm	10.0
PRESOCK-JR-10S	Heavy Preassembly Socket Ø 10 mm	10.0
PRESOCK-JR-12L	Light Preassembly Socket Ø 12 mm	12.0
PRESOCK-JR-12S	Heavy Preassembly Socket Ø 12 mm	12.0
PRESOCK-JR-14S	Heavy Preassembly Socket Ø 14 mm	14.0
PRESOCK-JR-15L	Light Preassembly Socket Ø 15 mm	15.0
PRESOCK-JR-16S	Heavy Preassembly Socket Ø 16 mm	16.0
PRESOCK-JR-18L	Light Preassembly Socket Ø 18 mm	18.0
PRESOCK-JR-20S	Heavy Preassembly Socket Ø 20 mm	20.0
PRESOCK-JR-22L	Light Preassembly Socket Ø 22 mm	22.0
PRESOCK-JR-25S	Heavy Preassembly Socket Ø 25 mm	25.0
PRESOCK-JR-28L	Light Preassembly Socket Ø 28 mm	28.0
PRESOCK-JR-30S	Heavy Preassembly Socket Ø 30 mm	30.0
PRESOCK-JR-35L	Light Preassembly Socket Ø 35 mm	35.0
PRESOCK-JR-38S	Heavy Preassembly Socket Ø 38 mm	38.0
PRESOCK-JR-42L	Light Preassembly Socket Ø 42 mm	42.0

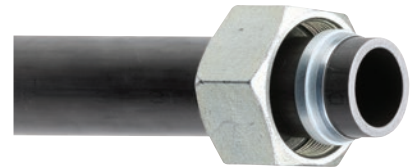
Preassembly Plates for MULTICEN-MIN and MULTICEN-JR

Part Number	Description	Tubing OD (mm)
PREPLATE-JR-6	Preassembly Plate Ø 6 mm	6.0
PREPLATE-JR-8	Preassembly Plate Ø 8 mm	8.0
PREPLATE-JR-10	Preassembly Plate Ø 10 mm	10.0
PREPLATE-JR-12	Preassembly Plate Ø 12 mm	12.0
PREPLATE-JR-14	Preassembly Plate Ø 14 mm	14.0
PREPLATE-JR-15	Preassembly Plate Ø 15 mm	15.0
PREPLATE-JR-16	Preassembly Plate Ø 16 mm	16.0
PREPLATE-JR-18	Preassembly Plate Ø 18 mm	18.0
PREPLATE-JR-20	Preassembly Plate Ø 20 mm	20.0
PREPLATE-JR-22	Preassembly Plate Ø 22 mm	22.0
PREPLATE-JR-25	Preassembly Plate Ø 25 mm	25.0
PREPLATE-JR-28	Preassembly Plate Ø 28 mm	28.0
PREPLATE-JR-30	Preassembly Plate Ø 30 mm	30.0
PREPLATE-JR-32	Preassembly Plate Ø 32 mm	32.0
PREPLATE-JR-35	Preassembly Plate Ø 35 mm	35.0
PREPLATE-JR-38	Preassembly Plate Ø 38 mm	38.0
PREPLATE-JR-42	Preassembly Plate Ø 42 mm	42.0

Flaring Tools for MULTICEN-MIN and MULTICEN-JR

Part Number	Description	Tubing OD (mm)
FLAIRBLOCK-JR	Flaring Block	6-42
FLAIRTOOL-JR-6	Flaring Tool Ø 6 mm	6.0
FLAIRTOOL-JR-8	Flaring Tool Ø 8 mm	8.0
FLAIRTOOL-JR-10	Flaring Tool Ø 10 mm	10.0
FLAIRTOOL-JR-12	Flaring Tool Ø 12 mm	12.0
FLAIRTOOL-JR-14	Flaring Tool Ø 14 mm	14.0
FLAIRTOOL-JR-15	Flaring Tool Ø 15 mm	15.0
FLAIRTOOL-JR-16	Flaring Tool Ø 16 mm	16.0
FLAIRTOOL-JR-18	Flaring Tool Ø 18 mm	18.0
FLAIRTOOL-JR-20	Flaring Tool Ø 20 mm	20.0
FLAIRTOOL-JR-22	Flaring Tool Ø 22 mm	22.0
FLAIRTOOL-JR-25	Flaring Tool Ø 25 mm	25.0
FLAIRTOOL-JR-28	Flaring Tool Ø 28 mm	28.0
FLAIRTOOL-JR-30	Flaring Tool Ø 30 mm	30.0
FLAIRTOOL-JR-32	Flaring Tool Ø 32 mm	32.0
FLAIRTOOL-JR-35	Flaring Tool Ø 35 mm	35.0
FLAIRTOOL-JR-38	Flaring Tool Ø 38 mm	38.0
FLAIRTOOL-JR-42	Flaring Tool Ø 42 mm	42.0

Preassembly



Note: Metric Tube Nuts (MTN Series) and Bite Sleeves (MBS Series) available. Refer to Kuriyama Hydraulic Connections Catalog pgs. 214-216.

37° Flaring



Because we continually examine ways to improve our products, we reserve the right to alter specifications or discontinue products without prior notice.

MULTICEN-MAX

Multifunctional / Tube Processing Center



Bending



37° Flaring



Deburring



Preassembly



Cutting

Description: Ideal for production tube processing, the top of the line MULTICEN-MAX performs bending, cutting, 24° ring pre-assembly, 37° flaring and deburring. Comes with a touch-screen, electronic control with the ability to store bending and flaring specifications. Optional electronic foot pedals available.

Tube Materials:

Stainless (AISI 316 TI) or Carbon (ST37.4) Steel

Cutting

Maximum Diameter (in)	4.9
-----------------------	-----

Bending

Tube Size, General Tube (in)	1/4 - 1 1/2
Tube Size, AISI 316 TI (Max Ø x thickness) (in)	1 1/4 x 0.15
Tube Size, AISI 316 TI (Max Ø x thickness) (in)	1 1/2 x 0.12
Tube Size, ST 37.4 (Max Ø x thickness) (in)	1 1/4 x 0.20
Tube Size, ST 37.4 (Max Ø x thickness) (in)	1 1/2 x 0.12
Max Bending Angle	180°

24° Preassembly

Tube Diameter Range (in)	0.236 - 1.654
Tube Max Width (in)	0.15

37° Flaring

Tube Diameter Range (in)	1/4 - 1 1/2
Tube Max Width (in)	0.15

Deburring

Tube Size Range (in)	0.236 - 1.654
----------------------	---------------

Multicenter Size

L x W x H (in)	55.1 x 31.5 x 59.0
Weight (lbs)	882

Part Number

MULTICEN-MAX-230/3

Motor Info

6.0 HP (230 V) 3 PH

Included Accessories:



Touch Screen
Electronic Control



Tool Holder



Electric Foot
Pedals (Bending)
PEDAL-MULT



Electronic Foot
Pedals (Flaring)
PEDAL-ES

Optional Accessories:

Because we continually examine ways to improve our products, we reserve the right to alter specifications or discontinue products without prior notice.

MULTICEN-MAX

Bending



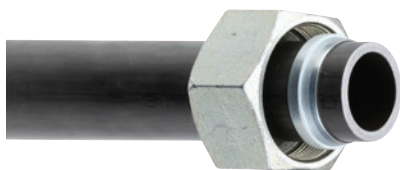
Bending Tools for MULTICEN-MAX

Part Number	Description	Min. Bend Radius (mm)	Max. Bend Angle (°)
BENDTOOL-MAX-6	Bending Tool Ø 6 mm	20.0	180
BENDTOOL-MAX-8	Bending Tool Ø 8 mm	22.0	180
BENDTOOL-MAX-10	Bending Tool Ø 10 mm	25.0	180
BENDTOOL-MAX-12	Bending Tool Ø 12 mm	25.0	180
BENDTOOL-MAX-14	Bending Tool Ø 14 mm	35.0	180
BENDTOOL-MAX-15	Bending Tool Ø 15 mm	35.0	180
BENDTOOL-MAX-16	Bending Tool Ø 16 mm	40.0	180
BENDTOOL-MAX-18	Bending Tool Ø 18 mm	40.0	180
BENDTOOL-MAX-20	Bending Tool Ø 20 mm	50.0	180
BENDTOOL-MAX-22	Bending Tool Ø 22 mm	50.0	180
BENDTOOL-MAX-25	Bending Tool Ø 25 mm	65.0	180
BENDTOOL-MAX-28	Bending Tool Ø 28 mm	75.0	180
BENDTOOL-MAX-30	Bending Tool Ø 30 mm	90.0	180
BENDTOOL-MAX-32	Bending Tool Ø 32 mm	90.0	180
BENDTOOL-MAX-35	Bending Tool Ø 35 mm	95.0	180
BENDTOOL-MAX-38	Bending Tool Ø 38 mm	95.0	180
BENDTOOL-MAX-42	Bending Tool Ø 42 mm	115.0	180
BENDTOOL-MAX-50	Bending Tool Ø 42 mm	135.0	180

Part Number	Description	Min. Bend Radius (mm)	Max. Bend Angle (°)
BENDTOOL-MAX-1/4	Bending Tool Ø 1/4"	0.78	180
BENDTOOL-MAX-5/16	Bending Tool Ø 5/16"	0.86	180
BENDTOOL-MAX-3/8	Bending Tool Ø 3/8"	1.00	180
BENDTOOL-MAX-1/2	Bending Tool Ø 1/2"	1.00	180
BENDTOOL-MAX-5/8	Bending Tool Ø 5/8"	1.57	180
BENDTOOL-MAX-3/4	Bending Tool Ø 3/4"	1.97	180
BENDTOOL-MAX-7/8	Bending Tool Ø 7/8"	1.97	180
BENDTOOL-MAX-1	Bending Tool Ø 1"	2.55	180
BENDTOOL-MAX-1 1/4	Bending Tool Ø 1 1/4"	3.54	180
BENDTOOL-MAX-1 1/2	Bending Tool Ø 1 1/2"	3.74	180

Because we continually examine ways to improve our products, we reserve the right to alter specifications or discontinue products without prior notice.

Preassembly



Note: Metric Tube Nuts (MTN Series) and Bite Sleeves (MBS Series) available.

Refer to Kuriyama Hydraulic Connections Catalog pgs. 214-216.

Preassembly Plates for MULTICEN-MAX

Part Number	Description	Tubing OD (mm)
PREPLATE-MAX-6	Preassembly Plate Ø 6 mm	6.0
PREPLATE-MAX-8	Preassembly Plate Ø 8 mm	8.0
PREPLATE-MAX-10	Preassembly Plate Ø 10 mm	10.0
PREPLATE-MAX-12	Preassembly Plate Ø 12 mm	12.0
PREPLATE-MAX-14	Preassembly Plate Ø 14 mm	14.0
PREPLATE-MAX-15	Preassembly Plate Ø 15 mm	15.0
PREPLATE-MAX-16	Preassembly Plate Ø 16 mm	16.0
PREPLATE-MAX-18	Preassembly Plate Ø 18 mm	18.0
PREPLATE-MAX-20	Preassembly Plate Ø 20 mm	20.0
PREPLATE-MAX-22	Preassembly Plate Ø 22 mm	22.0
PREPLATE-MAX-25	Preassembly Plate Ø 25 mm	25.0
PREPLATE-MAX-28	Preassembly Plate Ø 28 mm	28.0
PREPLATE-MAX-30	Preassembly Plate Ø 30 mm	30.0
PREPLATE-MAX-32	Preassembly Plate Ø 32 mm	32.0
PREPLATE-MAX-35	Preassembly Plate Ø 35 mm	35.0
PREPLATE-MAX-38	Preassembly Plate Ø 38 mm	38.0
PREPLATE-MAX-42	Preassembly Plate Ø 42 mm	42.0

Preassembly Sockets for MULTICEN-MAX

Part Number	Description	Tubing OD (mm)
PRESOCK-MAX-6L	Preassembly Socket Ø 6 mm	6.0
PRESOCK-MAX-6S	Preassembly Socket Ø 6 mm	6.0
PRESOCK-MAX-8L	Preassembly Socket Ø 8 mm	8.0
PRESOCK-MAX-8S	Preassembly Socket Ø 8 mm	8.0
PRESOCK-MAX-10L	Preassembly Socket Ø 10 mm	10.0
PRESOCK-MAX-10S	Preassembly Socket Ø 10 mm	10.0
PRESOCK-MAX-12L	Preassembly Socket Ø 12 mm	12.0
PRESOCK-MAX-12S	Preassembly Socket Ø 12 mm	12.0
PRESOCK-MAX-14S	Preassembly Socket Ø 14 mm	14.0
PRESOCK-MAX-15L	Preassembly Socket Ø 15 mm	15.0
PRESOCK-MAX-16S	Preassembly Socket Ø 16 mm	16.0
PRESOCK-MAX-18L	Preassembly Socket Ø 18 mm	18.0
PRESOCK-MAX-20S	Preassembly Socket Ø 20 mm	20.0
PRESOCK-MAX-22L	Preassembly Socket Ø 22 mm	22.0
PRESOCK-MAX-25S	Preassembly Socket Ø 25 mm	25.0
PRESOCK-MAX-28L	Preassembly Socket Ø 28 mm	28.0
PRESOCK-MAX-30S	Preassembly Socket Ø 30 mm	30.0
PRESOCK-MAX-35L	Preassembly Socket Ø 35 mm	35.0
PRESOCK-MAX-38S	Preassembly Socket Ø 38 mm	38.0
PRESOCK-MAX-42L	Preassembly Socket Ø 42 mm	42.0

Tight Bend Preassembly Plates for MULTICEN-MAX

Part Number	Description	Tubing OD (mm)
PREPLATE-MAX-6T	Tight Bend Preass. Plate Ø 6 mm	6.0
PREPLATE-MAX-8T	Tight Bend Preass. Plate Ø 8 mm	8.0
PREPLATE-MAX-10T	Tight Bend Preass. Plate Ø 10 mm	10.0
PREPLATE-MAX-12T	Tight Bend Preass. Plate Ø 12 mm	12.0
PREPLATE-MAX-14T	Tight Bend Preass. Plate Ø 14 mm	14.0
PREPLATE-MAX-15T	Tight Bend Preass. Plate Ø 15 mm	15.0
PREPLATE-MAX-16T	Tight Bend Preass. Plate Ø 16 mm	16.0
PREPLATE-MAX-18T	Tight Bend Preass. Plate Ø 18 mm	18.0

Because we continually examine ways to improve our products, we reserve the right to alter specifications or discontinue products without prior notice.

37° Flaring



Flaring Tools for MULTICEN-MAX

Part Number	Description	Tubing OD (mm)
FLAIRBLOCK-MAX-18	Flaring Block 6-18 mm	6-18
FLAIRBLOCK-MAX-42	Flaring Block 6-42 mm	6-42
FLAIRTOOL-MAX-6	Flaring Tool Ø 6 mm	6.0
FLAIRTOOL-MAX-8	Flaring Tool Ø 8 mm	8.0
FLAIRTOOL-MAX-10	Flaring Tool Ø 10 mm	10.0
FLAIRTOOL-MAX-12	Flaring Tool Ø 12 mm	12.0
FLAIRTOOL-MAX-14	Flaring Tool Ø 14 mm	14.0
FLAIRTOOL-MAX-15	Flaring Tool Ø 15 mm	15.0
FLAIRTOOL-MAX-16	Flaring Tool Ø 16 mm	16.0
FLAIRTOOL-MAX-18	Flaring Tool Ø 18 mm	18.0
FLAIRTOOL-MAX-20	Flaring Tool Ø 20 mm	20.0
FLAIRTOOL-MAX-22	Flaring Tool Ø 22 mm	22.0
FLAIRTOOL-MAX-25	Flaring Tool Ø 25 mm	25.0
FLAIRTOOL-MAX-28	Flaring Tool Ø 28 mm	28.0
FLAIRTOOL-MAX-30	Flaring Tool Ø 30 mm	30.0
FLAIRTOOL-MAX-32	Flaring Tool Ø 32 mm	32.0
FLAIRTOOL-MAX-35	Flaring Tool Ø 35 mm	35.0
FLAIRTOOL-MAX-38	Flaring Tool Ø 38 mm	38.0
FLAIRTOOL-MAX-42	Flaring Tool Ø 42 mm	42.0

Whitworth Flaring Tools for MULTICEN-MAX

Part Number	Description	Tubing OD (in)
FLAIRTOOL-MAX-1/4	Whitworth Flaring Tool Ø 1/4"	1/4
FLAIRTOOL-MAX-5/16	Whitworth Flaring Tool Ø 5/16"	5/16
FLAIRTOOL-MAX-3/8	Whitworth Flaring Tool Ø 3/8"	3/8
FLAIRTOOL-MAX-1/2	Whitworth Flaring Tool Ø 1/2"	1/2
FLAIRTOOL-MAX-5/8	Whitworth Flaring Tool Ø 5/8"	5/8
FLAIRTOOL-MAX-3/4	Whitworth Flaring Tool Ø 3/4"	3/4
FLAIRTOOL-MAX-7/8	Whitworth Flaring Tool Ø 7/8"	7/8
FLAIRTOOL-MAX-1	Whitworth Flaring Tool Ø 1"	1
FLAIRTOOL-MAX-1 1/4	Whitworth Flaring Tool Ø 1 1/4"	1 1/4
FLAIRTOOL-MAX-1 1/2	Whitworth Flaring Tool Ø 1 1/2"	1 1/2

Tight Flaring Tools for MULTICEN-MAX

Part Number	Description	Tubing OD (mm)
FLAIRTOOL-MAX-6T	Tight Flaring Tool Ø 6 mm	6.0
FLAIRTOOL-MAX-8T	Tight Flaring Tool Ø 8 mm	8.0
FLAIRTOOL-MAX-10T	Tight Flaring Tool Ø 10 mm	10.0
FLAIRTOOL-MAX-12T	Tight Flaring Tool Ø 12 mm	12.0
FLAIRTOOL-MAX-14T	Tight Flaring Tool Ø 14 mm	14.0
FLAIRTOOL-MAX-15T	Tight Flaring Tool Ø 15 mm	15.0
FLAIRTOOL-MAX-16T	Tight Flaring Tool Ø 16 mm	16.0
FLAIRTOOL-MAX-18T	Tight Flaring Tool Ø 18 mm	18.0

Tight Flaring Tools for MULTICEN-MAX

Part Number	Description	Tubing OD (in)
FLAIRTOOL-MAX-1/4T	Tight Flaring Tool Ø 1/4"	1/4
FLAIRTOOL-MAX-5/16T	Tight Flaring Tool Ø 5/16"	5/16
FLAIRTOOL-MAX-3/8T	Tight Flaring Tool Ø 3/8"	3/8
FLAIRTOOL-MAX-1/2T	Tight Flaring Tool Ø 1/2"	1/2
FLAIRTOOL-MAX-5/8T	Tight Flaring Tool Ø 5/8"	5/8

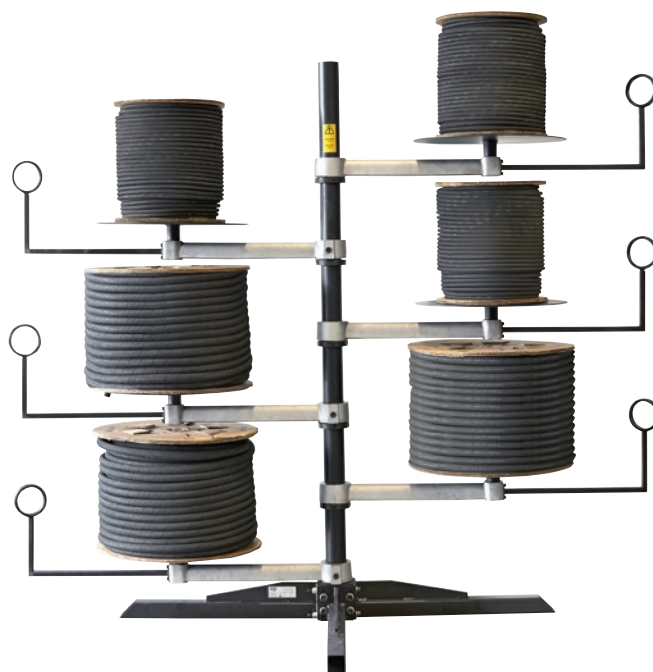
Because we continually examine ways to improve our products, we reserve the right to alter specifications or discontinue products without prior notice.

KRACK6H

Six Coil Horizontal Hose Rack

Specifications	
Max Arm Load (lbs)	474
L x W x H (in)	93.4 x 79.2 x 79.2
Weight (lbs)	377

Description: Designed to optimize and organize your workshop, the KRACK6H features six horizontal hose racks that rotate for ease in loading and unloading.

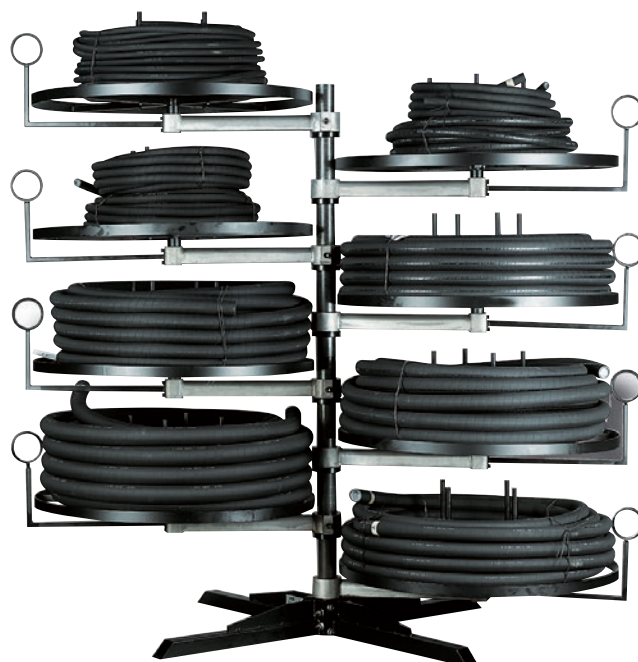


KRACK8H

Eight Coil Horizontal Hose Rack

Specifications	
Max Arm Load (lbs)	473
L x W x H (in)	93.5 x 93.5 x 85.6
Weight (lbs)	474

Description: Designed to optimize and organize your workshop, the KRACK8H features eight horizontal hose racks that rotate for ease in loading and unloading.



Because we continually examine ways to improve our products, we reserve the right to alter specifications or discontinue products without prior notice.



KRACK6H2

Six Coil Horizontal Hose Rack

Specifications

Max Arm Load (lbs)	240
L x W x H (in)	41.7 x 41.7 x 78.0
Weight (lbs)	198

Description: Designed to optimize and organize your workshop, the KRACK6H2 features six horizontal hose racks that pull out for ease in loading and unloading. Its small footprint is great for shops where space is at a premium.



KRACK6V

Six Coil Vertical Hose Rack

Specifications

Max Arm Load (lbs)	352
L x W x H (in)	63.0 x 63.0 x 90.6
Weight (lbs)	240

Description: Designed to optimize and organize your workshop, the KRACK6V features six vertical hose racks that help facilitate winding of the hose reels. Vertical for easy winding/unwinding.

Because we continually examine ways to improve our products, we reserve the right to alter specifications or discontinue products without prior notice.

KCART1

Short Assembly Hose Cart

Specifications	
Max Arm Load (lbs)	330
L x W x H (in)	36.1 x 51.2 x 79.5
Weight (lbs)	198

Description: With wheels and four trays, the KCART1 is perfectly designed to transport shorter hose assemblies around the shop.



KCART2

Long Assembly Hose Cart

Specifications	
Max Arm Load (lbs)	1543
L x W x H (in)	59.1 x 27.2 x 56.7
Weight (lbs)	209

Description: With wheels and a tall frame, the KCART2 is perfectly designed to transport longer hose assemblies around the shop.

Height adjustable to accommodate various assembly lengths.



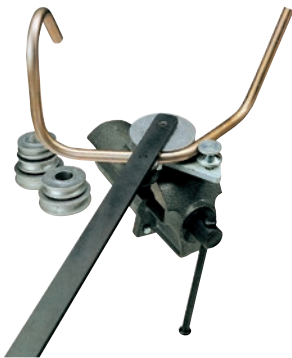
Because we continually examine ways to improve our products, we reserve the right to alter specifications or discontinue products without prior notice.

Additional types of hose and tubing processing equipment are available upon request. Please contact Kuriyama Customer Service for details.

Test Benches



Tube Benders



Flaring and Preassembly



Because we continually examine ways to improve our products, we reserve the right to alter specifications or discontinue products without prior notice.

Additional Available Products

Additional types of hose and tubing processing equipment are available upon request. Please contact Kuriyama Customer Service for details.

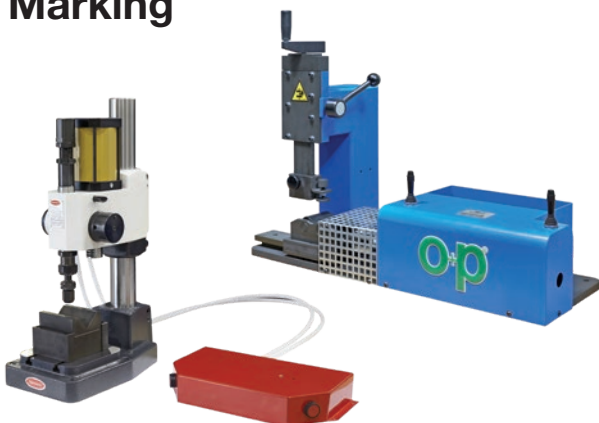
Washing



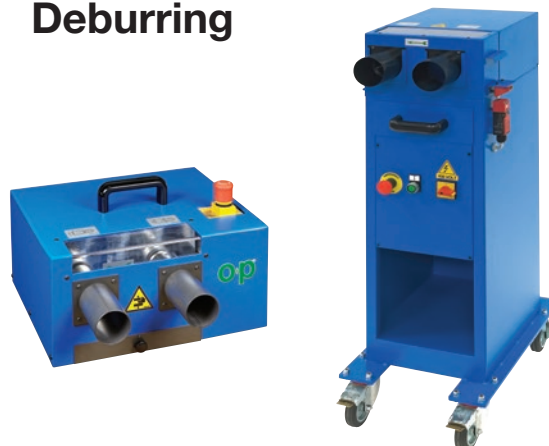
Filtering



Marking



Deburring



Because we continually examine ways to improve our products, we reserve the right to alter specifications or discontinue products without prior notice.

Additional types of hose and tubing processing equipment are available upon request. Please contact Kuriyama Customer Service for details.

Coiling



Marking & Cutting Lines



Mobile Workshops



Because we continually examine ways to improve our products, we reserve the right to alter specifications or discontinue products without prior notice.

This image shows a single sheet of white paper with horizontal ruling lines. The lines are evenly spaced and run across the width of the page. There are no margins, text, or other markings on the paper.

This image shows a single sheet of white paper with horizontal ruling lines. The lines are evenly spaced and run across the width of the page. There are no margins, text, or other markings on the paper.

KKOPCA1220

Cautionary Statement

All Products sold and distributed by Kuriyama of America, Inc. are in the nature of commodities and they are sold by published specifications and not for particular purposes, uses or applications. Purchaser shall first determine their suitability for the intended purposes, uses or applications and shall either conduct its own engineering studies or tests, or retain qualified engineers, consultants or testing laboratories and consult with them before determining the proper use, suitability or propriety of the merchandise or Products for the intended purposes, uses or applications.

Kuriyama of America, Inc. ("Seller") does not recommend the Products for any particular purpose, use or application, and the Purchaser or user thereof shall assume full responsibility for the suitability, propriety, use and application of the Products. Purchaser shall follow all instructions contained in Seller's catalogs, brochures, technical bulletins and other documents regarding the Products. The Products, including but not limited to, hose, tubing or couplings, may fail due to the use or conveyance of substances at elevated or lowered temperatures or at excessive pressure, the conveyance of abrasive, injurious, flammable, explosive or damaging substances.

Hose or tubing used in bent configurations will be subjected to increased abrasion. Hose clamps or couplings may loosen after initial installation and all sections of hose and tubing including connections, couplings, clamps, conductivity and bonding should be inspected frequently, regularly and consistently, and should be replaced, adjusted or re-tightened for the avoidance of leakage, for the prevention of injuries or damages, and for general safety purposes. Except as indicated in its Limited Warranty, Seller shall not be liable or responsible for direct or indirect injuries or damages caused by or attributed to the failure or malfunction of any Products sold or distributed by it.

Purchasers or users of the Products should frequently and consistently undertake inspections and protective measures with respect to the use and application of Products, which should include the examination of tube and cover, conditions of the hose or tubing, and the identification, repair or replacement of sections showing cracking, blistering, separations, internal and external abrasions, leaking or slipped couplings or connections and make proper proof tests.

Limited Warranty

The Products sold or distributed by Seller are warranted to its customers to be free from defects in material and workmanship at the time of shipment by us, subject to the following provisions. ALL WARRANTY CLAIMS SHALL BE MADE WITHIN SIX (6) MONTHS AFTER SELLER SHIPPED THE PRODUCTS. SELLER'S LIABILITY HEREUNDER IS LIMITED AT SELLER'S EXCLUSIVE DISCRETION, TO 1) THE PURCHASE PRICE OF ANY PRODUCTS PROVING DEFECTIVE; 2) REPAIR OF ANY DEFECTIVE PRODUCT OR PART THEREOF; OR 3) REPLACEMENT OF ANY DEFECTIVE PRODUCT OR PART UPON ITS AUTHORIZED RETURN TO SELLER.

THIS WARRANTY IS IN LIEU OF AND EXCLUDES ALL OTHER WARRANTIES, EXPRESSED, IMPLIED, STATUTORY, OR OTHERWISE CREATED UNDER APPLICABLE LAW INCLUDING, BUT NOT LIMITED TO, THE WARRANTY OF MERCHANTABILITY AND THE WARRANTY OF FITNESS FOR A PARTICULAR PURPOSE. IN NO EVENT SHALL SELLER OR THE MANUFACTURER OF THE PRODUCT BE LIABLE FOR SPECIAL, INCIDENTAL, OR CONSEQUENTIAL DAMAGES, INCLUDING LOSS OF PROFITS, WHETHER OR NOT CAUSED BY OR RESULTING FROM THE NEGLIGENCE OF SELLER AND/OR THE MANUFACTURER OF THE PRODUCT, UNLESS SPECIFICALLY PROVIDED HEREIN. IN ADDITION, THIS WARRANTY SHALL NOT APPLY TO ANY PRODUCTS OR PORTIONS THEREOF WHICH HAVE BEEN SUBJECTED TO ABUSE, MISUSE, IMPROPER INSTALLATION, MAINTENANCE, OR OPERATION, ELECTRICAL FAILURE OR ABNORMAL CONDITIONS, AND TO PRODUCTS WHICH HAVE BEEN TAMPERED WITH, ALTERED, MODIFIED, REPAIRED, REWORKED BY ANYONE NOT APPROVED BY SELLER, OR USED IN ANY MANNER INCONSISTENT WITH THE PROVISIONS OF THE "CAUTIONARY STATEMENT" ABOVE OR ANY INSTRUCTIONS OR SPECIFICATIONS PROVIDED WITH OR FOR THE PRODUCT. 09/17/18 REV

Distributed by:



Kuriyama of America, Inc.

Headquarters, Sales Office and Warehouse Location

360 E. State Parkway, Schaumburg, IL 60173-5335

Phone: (847) 755-0360 • Toll-free FAX: (800) 800-0320

International FAX: (847) 885-0996

Web Site: www.kuriyama.com

E-Mail: sales@kuriyama.com



The trademarks contained in this publication are trademarks of Kuriyama of America, Inc.
The "Alfagomma" trademark contained in this publication is a registered trademark of Alfagomma S.p.A.
The "O+P®" trademark contained in this publication is a registered trademark of OP USA Inc.

CONTACT OUR SALES/WAREHOUSE LOCATIONS BELOW WHICH SERVE YOUR AREA

SOUTHWEST WAREHOUSE KURIYAMA OF AMERICA, INC.

HOUSTON

200 PORTWALL STREET, SUITE 100

HOUSTON, TX 77029

Phone: (713) 674-8212

Toll Free Phone: (800) 501-6808

FAX: (713) 674-5214

Toll Free FAX: (800) 800-5214

WESTERN WAREHOUSE KURIYAMA OF AMERICA, INC.

SANTA FE SPRINGS

10749 SHOEMAKER AVENUE

SANTA FE SPRINGS, CA 90670-4039

Phone: (562) 941-4507

FAX: (562) 941-8940

Toll-Free FAX: (800) 326-8940

SOUTHEAST WAREHOUSE FORTNEY SALES CO., INC.

4221 CANTRELL ROAD NW

ACWORTH, GA 30101

Phone: (770) 427-6528

FAX: (770) 423-9249

Toll Free FAX: (800) 423-9249

Web Site: www.fortneysales.com

E-Mail: sales@fortneysales.com

EASTERN WAREHOUSE EASTERN RUBBER & PLASTICS CO., INC.

100 GOLDMAN DR.

PLUMSTED INDUSTRIAL PARK

CREAM RIDGE, NJ 08514

Phone: (609) 758-0100

FAX: (609) 758-0102

Toll Free FAX: (800) 445-7138

Web Site: www.easternrubber.com

E-Mail: sales@easternrubber.com

IN MEXICO:

KURIYAMA DE MÉXICO S DE RL DE CV

AV JOSE PALOMO MARTINEZ NO 520-20

BODEGA 5

PARQUE INDUSTRIAL OMOLAP

APODACA, N.L. CP:66633, MÉXICO

Telefonos: (81) 1086-1870 O 71

Lada sin Costo 01 800 822 52 00

FAX: (81) 1086-1869

Internet: www.kuriyama.com

Correo Electronico: ventas@kuriyama.com



Visit us

www.kuriyama.com

on the Web!

EDITION 1220