

## KC4-V59 Series



Hose Capacity (in)		Crimping Force (ton)
1 – 2 Wire	1 1/2	<b>155</b>
4 SP / 6 SP	1 1/4 / 1	
90° Fittings	1 1/2	
Industrial	NA	

Opening Diameter	
Max. Without Dies (mm / in)	<b>119 / 4.69</b>
Max. With Dies (mm / in)	<b>96 / 3.78</b>
By Die Size (mm / in)	Die Size + <b>50 / 1.97</b>

Crimper Size	
L x W x H (in)	26.0 x 28.4 x 58.7
Weight (lbs)	1,199

Part Number	Motor Info
<b>KC4-V59-230/3</b>	7.5 HP (230 V) 3 PH

Die Series	Die Range (mm)
V69	6 – 46

**Control Mechanism:**

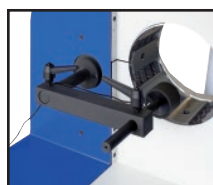



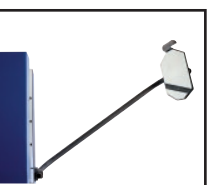
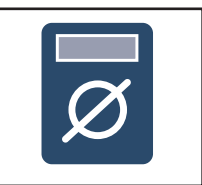
- Large, full-color, touch-screen display
- Stores up to 1,000 crimp specifications
- Built-in crimp diameter calculator
- USB port connection
- Optional upgrades such as digital caliper, history data save, barcode reader, webcam and WiFi connection

**ES4**

-  **Greaseless Operation**
-  **Silent Pump**
-  **Fixed 6 O'clock Position**

**Description:** A mass production crimper boasting an impressive 3,900\* crimps per hour. Its back limit switch and advanced Siemen's ES4 computerized controller take efficiency to the highest level. The crimping chamber is fixed at the 6 o'clock position allowing the hose to rest inside the chamber rather than having to be centered.

### Included Accessories:

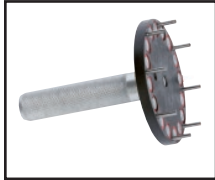
					
Back Limit Switch	Electric Foot Pedal PEDAL-ES	Die Holder Base (15 pc.)	Fitting Orientation Protractor	Back Mirror	Crimp Calculator

\*Theoretical with a 1/2" Δ @ 6mm hose

Because we continually examine ways to improve our products, we reserve the right to alter specifications or discontinue products without prior notice.

## KC4-V59 Series

### Optional Accessories: (pgs. 34 – 41)



Quick Change Die Tool  
KCQCT-H69



Patented Quick Change Die Tool  
KCPQCT-V59



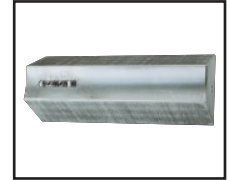
Die Rack (12 pc.)  
DIERACK-H69



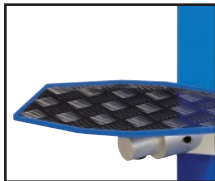
ES4 Upgrades  
(pgs. 36 & 37)



Custom Made Dies  
(pg. 41)



Marking Dies  
(pg. 41)



Mounted Side Table  
TABLE-KC



Protection Net with  
Activation Switch

### Dies for KC4-V59:

Die Number	Crimp Range (mm)	Closed Diameter (mm)	Length (mm)	Weight (lbs/ea)
KCDV69-6	6.0 - 8.0	6	85	4.0
KCDV69-8	8.0 - 10.0	8	85	4.0
KCDV69-10	10.0 - 12.0	10	85	4.0
KCDV69-12	12.0 - 14.0	12	85	4.0
KCDV69-14	14.0 - 16.0	14	85	4.0
KCDV69-16	16.0 - 19.0	16	85	4.0
KCDV69-19	19.0 - 22.0	19	85	4.0
KCDV69-22	22.0 - 25.0	22	85	4.0
KCDV69-25	25.0 - 29.0	25	85	4.0
KCDV69-29	29.0 - 34.0	29	85	4.0
KCDV69-34	34.0 - 38.0	34	85	4.0
KCDV69-38	38.0 - 42.0	38	85	4.0
KCDV69-42	42.0 - 46.0	42	85	4.0
KCDV69-46	46.0 - 50.0	46	85	4.0

Special dies available up to 54 mm.

Because we continually examine ways to improve our products, we reserve the right to alter specifications or discontinue products without prior notice.