

KC1-H130 Series



Description: The KC1-H130 is a powerful yet economical shop crimper with the ability to crimp up to 2" 4 SP, 1 1/4" 6 SP hydraulic as well as industrial hose up to 3".

Hose Capacity (in)	Crimping Force (ton)
1 – 2 Wire	210
4 SP / 6 SP	
90° Fittings	
Industrial	

Opening Diameter	
Max. Without Dies (mm / in)	154 / 6.06
Max. With Dies (mm / in)	108 / 4.25
By Die Size (mm / in)	Die Size + 35 / 1.38

Crimper Size	
L x W x H (in)	26.2 x 23.1 x 26
Weight (lbs)	454

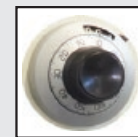
Part Number	Motor Info
KC1-H130-230/1	2.9 HP (230 V) 1 PH

Die Series	Die Range (mm)
H119	6 – 96

Refer to pg. 20 for available dies

Control Mechanism:

- Dial micrometer with locking switch
- Electromechanical controls with power, open/close and emergency off buttons



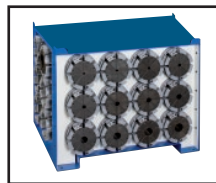
Optional Accessories: (pgs. 34 – 41)



Quick Change Die Tool
KCQCT-H119



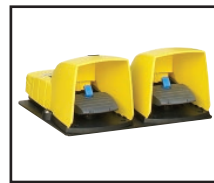
Patented Quick Change Die Tool
KCPQCT-H130



Die Holder Base (18 pc.)
DIEBASE-H130



Die Rack (8 pc.)
DIERACK-H119



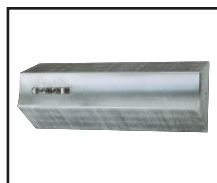
Electric Foot Pedals
PEDAL-KC1



Cleaning and Lubrication Kit
CALKIT-H130



Custom Made Dies
(pg. 41)



Marking Dies
(pg. 41)

Because we continually examine ways to improve our products, we reserve the right to alter specifications or discontinue products without prior notice.